

ASCE STANDARD

ASCE/SEI

41-17

Seismic Evaluation and Retrofit of Existing Buildings

ASCE STANDARD

ASCE/SEI
41-17

Seismic Evaluation and Retrofit of Existing Buildings



PUBLISHED BY THE AMERICAN SOCIETY OF CIVIL ENGINEERS

Library of Congress Cataloging-in-Publication Data

Names: American Society of Civil Engineers.

Title: ASCE standard, ASCE/SEI, 41-17, seismic evaluation and retrofit of existing buildings.

Other titles: Seismic evaluation and retrofit of existing buildings

Description: Reston, Virginia : American Society of Civil Engineers, 2017. | Includes bibliographical references and index.

Identifiers: LCCN 2017047777 | ISBN 9780784414859 (soft cover : alk. paper) | ISBN 9780784480816 (PDF)

Subjects: LCSH: Earthquake resistant design—Standards. | Buildings—Earthquake effects.

Classification: LCC TH1095 .A527 2017 | DDC 693.8/52021873—dc23

LC record available at <https://lcn.loc.gov/2017047777>

Published by American Society of Civil Engineers

1801 Alexander Bell Drive

Reston, Virginia, 20191-4382

www.asce.org/bookstore | ascelibrary.org

This standard was developed by a consensus standards development process that has been accredited by the American National Standards Institute (ANSI). Accreditation by ANSI, a voluntary accreditation body representing public and private sector standards development organizations in the United States and abroad, signifies that the standards development process used by ASCE has met the ANSI requirements for openness, balance, consensus, and due process.

While ASCE's process is designed to promote standards that reflect a fair and reasoned consensus among all interested participants, while preserving the public health, safety, and welfare that is paramount to its mission, it has not made an independent assessment of and does not warrant the accuracy, completeness, suitability, or utility of any information, apparatus, product, or process discussed herein. ASCE does not intend, nor should anyone interpret, ASCE's standards to replace the sound judgment of a competent professional, having knowledge and experience in the appropriate field(s) of practice, nor to substitute for the standard of care required of such professionals in interpreting and applying the contents of this standard.

ASCE has no authority to enforce compliance with its standards and does not undertake to certify products for compliance or to render any professional services to any person or entity.

ASCE disclaims any and all liability for any personal injury, property damage, financial loss, or other damages of any nature whatsoever, including without limitation any direct, indirect, special, exemplary, or consequential damages, resulting from any person's use of, or reliance on, this standard. Any individual who relies on this standard assumes full responsibility for such use.

ASCE and American Society of Civil Engineers—Registered in U.S. Patent and Trademark Office.

Photocopies and permissions. Permission to photocopy or reproduce material from ASCE publications can be requested by sending an e-mail to permissions@asce.org or by locating a title in ASCE's Civil Engineering Database (<http://cedb.asce.org>) or ASCE Library (<http://ascelibrary.org>) and using the "Permissions" link.

Errata: Errata, if any, can be found at <https://doi.org/10.1061/9780784414859>.

Copyright © 2017 by the American Society of Civil Engineers.

All Rights Reserved.

ISBN 978-0-7844-1485-9 (soft cover)

ISBN 978-0-7844-8081-6 (PDF)

Manufactured in the United States of America.

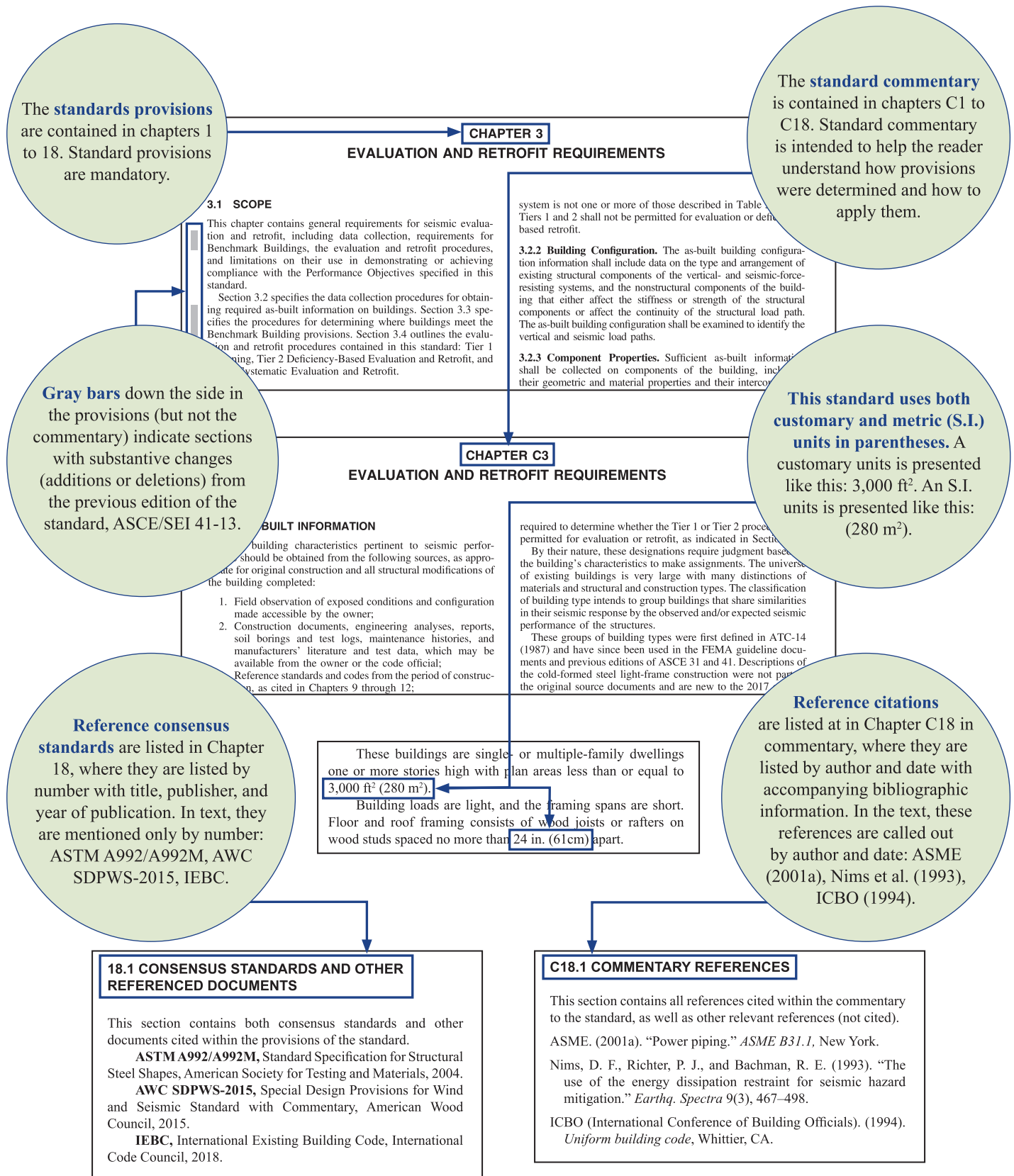
ASCE STANDARDS

In 2014, the Board of Direction approved revisions to the ASCE Rules for Standards Committees to govern the writing and maintenance of standards developed by ASCE. All such standards are developed by a consensus standards process managed by the ASCE Codes and Standards Committee (CSC). The consensus process includes balloting by a balanced standards committee, and reviewing during a public comment period. All standards are updated or reaffirmed by the same process every five to ten years. Requests for formal interpretations shall be processed in accordance with Section 7 of ASCE Rules for Standards Committees which are available at www.asce.org. Errata, addenda, supplements, and interpretations, if any, for this standard can also be found at www.asce.org.

This standard has been prepared in accordance with recognized engineering principles and should not be used without the user's competent knowledge for a given application. The publication of this standard by ASCE is not intended to warrant that the information contained therein is suitable for any general or specific use, and ASCE takes no position respecting the validity of patent rights. The user is advised that the determination of patent rights or risk of infringement is entirely their own responsibility.

A complete list of currently available standards is available in the ASCE Library (<http://ascelibrary.org/page/books/s-standards>).

Tips for Using This Standard



Supplements, errata, and interpretations may become available in the future.
Please check for important new materials at <https://doi.org/10.1061/9780784414859>.

CONTENTS

ASCE STANDARDS.		iii
TIPS FOR USING THIS STANDARD		iv
FOREWORD.		xxxix
ACKNOWLEDGMENTS		xli
UNIT CONVERSIONS		xlv
1	GENERAL REQUIREMENTS	1
1.1	Scope	1
1.2	Definitions and Notations	1
1.2.1	Definitions	1
1.2.2	Notations	7
1.2.2.1	Upper Case Notations	7
1.2.2.2	Lower-case Notations	14
1.2.2.3	Greek Notations	16
1.3	Evaluation and Retrofit Process	19
1.4	Seismic Evaluation Process	19
1.4.1	Selection of Performance Objective	19
1.4.2	Level of Seismicity	19
1.4.3	As-Built Information	19
1.4.4	Evaluation Procedures	19
1.4.5	Evaluation Report	19
1.5	Seismic Retrofit Process	20
1.5.1	Initial Considerations	20
1.5.2	Selection of Performance Objective	20
1.5.3	Level of Seismicity	20
1.5.4	As-Built Information	20
1.5.5	Retrofit Procedures	20
1.5.6	Retrofit Strategies	20
1.5.7	Retrofit Measures	20
1.5.8	Verification of Retrofit Design	20
1.5.9	Construction Documents	20
1.5.10	Construction Quality Assurance	20
1.5.10.1	Construction Quality Assurance Plan	20
1.5.10.2	Construction Quality Assurance Requirements	20
1.5.10.3	Responsibilities of the Authority Having Jurisdiction	21
2	PERFORMANCE OBJECTIVES AND SEISMIC HAZARDS.	23
2.1	Scope	23
2.2	Performance Objectives	23
2.2.1	Basic Performance Objective for Existing Buildings (BPOE)	23
2.2.2	Enhanced Performance Objectives	23
2.2.3	Limited Performance Objectives	23
2.2.4	Basic Performance Objective Equivalent to New Building Standards (BPON)	23
2.2.5	Partial Retrofit	23
2.2.6	System-Specific Performance Procedures	23
2.3	Target Building Performance Levels	23
2.3.1	Structural Performance Levels and Ranges	23

2.3.1.1	Immediate Occupancy Structural Performance Level (S-1)	24
2.3.1.2	Enhanced Safety Structural Performance Range	24
2.3.1.3	Life Safety Structural Performance Level (S-3)	24
2.3.1.4	Reduced Safety Structural Performance Range (S-4)	24
2.3.1.5	Collapse Prevention Structural Performance Level (S-5)	25
2.3.1.6	Structural Performance Not Considered (S-6)	25
2.3.2	Nonstructural Performance Levels	25
2.3.2.1	Operational Nonstructural Performance Level (N-A)	25
2.3.2.2	Position Retention Nonstructural Performance Level(N-B)	25
2.3.2.3	Life Safety Nonstructural Performance Level (N-C)	25
2.3.2.4	Hazards Reduced Nonstructural Performance Level (N-D)	25
2.3.2.5	Nonstructural Performance Not Considered (N-E)	25
2.3.3	Designation of Target Building Performance Levels	25
2.3.3.1	Operational Building Performance Level (1-A)	25
2.3.3.2	Immediate Occupancy Building Performance Level (1-B)	25
2.3.3.3	Life Safety Building Performance Level (3-C)	26
2.3.3.4	Collapse Prevention Building Performance Level (5-D)	26
2.4	Seismic Hazard.	26
2.4.1	General Procedure for Hazard Caused by Ground Shaking	26
2.4.1.1	BSE-2N Spectral Response Acceleration Parameters	26
2.4.1.2	BSE-1N Spectral Response Acceleration Parameters	26
2.4.1.3	BSE-2E Spectral Response Acceleration Parameters	26
2.4.1.4	BSE-1E Spectral Response Acceleration Parameters	26
2.4.1.5	Response Acceleration Parameters for Other Probabilities of Exceedance	26
2.4.1.6	Adjustment for Site Class	26
2.4.1.7	General Response Spectrum	27
2.4.2	Site-Specific Procedure for Hazards Caused by Ground Shaking	27
2.4.2.1	Site-Specific Response Spectra	27
2.4.3	Ground Motion Acceleration Histories	27
2.5	Level of Seismicity.	27
3	EVALUATION AND RETROFIT REQUIREMENTS	29
3.1	Scope	29
3.2	As-Built Information	29
3.2.1	Building Type	29
3.2.2	Building Configuration.	29
3.2.3	Component Properties	29
3.2.4	Site and Foundation Information	29
3.2.5	Adjacent Buildings.	29
3.2.5.1	Building Pounding	29
3.2.5.2	Shared Element Condition	34
3.2.5.3	Hazards from Adjacent Buildings	34
3.3	Benchmark Buildings	34
3.3.1	Existing Documents	34
3.3.2	Field Verification.	34
3.3.3	Condition Assessment	34
3.3.4	Geologic Site Hazards	34
3.4	Evaluation and Retrofit Procedures	34
3.4.1	Limitations on the Use of Tier 1 and Tier 2 Evaluation and Retrofit Procedures	36
3.4.1.1	Buildings Conforming to One of the Common Building Types	36
3.4.1.2	Buildings Composed of More than One of the Common Building Types	38
3.4.2	Tier 1 Screening Procedure	38
3.4.3	Tier 2 Deficiency-Based Evaluation and Retrofit Procedures.	38
3.4.3.1	Evaluation Requirements.	38
3.4.3.2	Retrofit Requirements	38
3.4.4	Tier 3 Systematic Evaluation and Retrofit Procedures	38
3.4.4.1	Evaluation Requirements.	38
3.4.4.2	Retrofit Requirements	38
4.	TIER 1 SCREENING	41
4.1	Scope	41
4.1.1	Performance Level	41
4.1.2	Seismic Hazard Level	41

4.1.3	Level of Seismicity	41
4.2	Scope of Investigation Required	41
4.2.1	On-Site Investigation and Condition Assessment	41
4.2.2	Building Type	41
4.2.3	Default Material Values	41
4.3	Selection and Use of Checklists	41
4.4	Tier 1 Analysis	44
4.4.1	Overview	44
4.4.2	Seismic Forces	44
4.4.2.1	Pseudo Seismic Force	44
4.4.2.2	Story Shear Forces	44
4.4.2.3	Spectral Acceleration	45
4.4.2.4	Period	45
4.4.3	Quick Checks for Strength and Stiffness	46
4.4.3.1	Story Drift for Moment Frames	46
4.4.3.2	Shear Stress in Concrete Frame Columns	47
4.4.3.3	Shear Stress in Shear Walls	47
4.4.3.4	Diagonal Bracing	47
4.4.3.5	Precast Connections	47
4.4.3.6	Column Axial Stress Caused by Overturning	47
4.4.3.7	Flexible Diaphragm Connection Forces	48
4.4.3.8	Prestressed Elements	48
4.4.3.9	Flexural Stress in Columns and Beams of Steel Moment Frames	48
5	TIER 2 DEFICIENCY-BASED EVALUATION AND RETROFIT	49
5.1	Scope	49
5.2	General Requirements	49
5.2.1	Performance Level and Seismic Hazard Level	49
5.2.2	As-Built Information	49
5.2.3	Condition Assessment	49
5.2.4	Tier 2 Analysis Methods	49
5.2.5	Tier 2 Acceptance Criteria	52
5.2.6	Knowledge Factor	52
5.3	Tier 2 Deficiency-Based Evaluation Requirements	52
5.4	Procedures for Basic Configuration of Building Systems	52
5.4.1	General	52
5.4.1.1	Load Path	52
5.4.1.2	Adjacent Buildings	52
5.4.1.3	Mezzanines	52
5.4.2	Building Configuration	52
5.4.2.1	Weak Story Irregularity	52
5.4.2.2	Soft Story Irregularity	52
5.4.2.3	Vertical Irregularities	52
5.4.2.4	Geometric Irregularity	52
5.4.2.5	Mass Irregularity	52
5.4.2.6	Torsion Irregularity	52
5.4.3	Geologic Site Hazards and Foundation Components	52
5.4.3.1	Geologic Site Hazards	52
5.4.3.2	Foundation Performance	52
5.4.3.3	Overturning	53
5.4.3.4	Ties between Foundation Elements	53
5.5	Procedures for Seismic-Force-Resisting Systems	53
5.5.1	General	53
5.5.1.1	Redundancy	53
5.5.2	Procedures for Moment Frames	53
5.5.2.1	General Procedures for Moment Frames	53
5.5.2.2	Procedures for Steel Moment Frames	53
5.5.2.3	Procedures for Concrete Moment Frames	53
5.5.2.4	Procedures for Precast Concrete Moment Frames	54
5.5.2.5	Procedures for Frames Not Part of the Seismic-Force-Resisting System	54
5.5.3	Procedures for Shear Walls	54
5.5.3.1	General Procedures for Shear Walls	54
5.5.3.2	Procedures for Concrete Shear Walls	54
5.5.3.3	Procedures for Precast Concrete Shear Walls	54

	5.5.3.4	Procedures for Unreinforced Masonry Shear Walls	55
	5.5.3.5	Procedures for Infill Walls in Frames	55
	5.5.3.6	Procedures for Walls in Wood Frame Buildings	55
	5.5.3.7	Procedures for Cold-Formed Steel Light-Frame Construction, Shear Wall Systems.	55
	5.5.4	Procedures for Braced Frames.	55
	5.5.4.1	Axial Stress Check.	55
	5.5.4.2	Column Splices.	55
	5.5.4.3	Slenderness of Diagonals	55
	5.5.4.4	Connection Strength	55
	5.5.4.5	Out-of-Plane Restraint for Braced Frames.	56
	5.5.4.6	K-Bracing and Chevron-Bracing Configurations	56
	5.5.4.7	Tension-Only Braces.	56
	5.5.4.8	Centrally Braced Frame Joints	56
	5.5.4.9	Procedures for Cold-Formed Steel Light-Frame Construction, Strap-Braced Wall Systems.	56
5.6		Procedures for Diaphragms	56
	5.6.1	General Procedures for Diaphragms	56
	5.6.1.1	Diaphragm and Roof Chord Continuity	56
	5.6.1.2	Diaphragm Cross Ties	56
	5.6.1.3	Openings in Diaphragms at Shear Walls, Braced Frames, and Moment Frames	56
	5.6.1.4	Plan Irregularities in Diaphragms	56
	5.6.1.5	Diaphragm Reinforcement at Openings	56
	5.6.2	Procedures for Wood Diaphragms.	56
	5.6.3	Procedures for Metal Deck Diaphragms.	56
	5.6.4	Procedures for Precast Concrete Diaphragms	56
	5.6.5	Diaphragms Other than Wood, Metal Deck, Concrete, or Horizontal Bracing.	57
5.7		Procedures for Connections	57
	5.7.1	Anchorage for Normal Forces	57
	5.7.1.1	Wall Anchorage	57
	5.7.1.2	Stiffness of Wall Anchors	57
	5.7.1.3	Wood Ledgers with Cross-Grain Bending	57
	5.7.1.4	Precast Concrete Panel Connections.	57
	5.7.2	Connections for Shear Transfer	57
	5.7.3	Connections for Vertical Elements	57
	5.7.3.1	Steel and Concrete Columns.	57
	5.7.3.2	Shear Wall Boundary Columns	57
	5.7.3.3	Wood or Cold-Formed Steel Posts and Wood Sills and Cold-Formed Steel Base Tracks	57
	5.7.3.4	Concrete Walls, Precast Wall Panels, and Other Wall Panels	57
	5.7.3.5	Uplift at Pile Caps	57
	5.7.4	Interconnection of Elements	57
	5.7.4.1	Girder–Column Connection	57
	5.7.4.2	Girders Supported by Walls or Pilasters	57
	5.7.4.3	Corbel Bearing and Connections	57
	5.7.4.4	Beam, Girder, and Truss Supported on Unreinforced Masonry (URM) Walls or URM Pilasters.	57
	5.7.5	Roof and Wall Panel Connections.	57
5.8		Tier 2 Deficiency-Based Retrofit Requirements	57
6		TIER 3 SYSTEMATIC EVALUATION AND RETROFIT	59
	6.1	Scope	59
	6.2	Data Collection Requirements	59
	6.2.1	Minimum Data Collection Requirements	59
	6.2.2	Usual Data Collection Requirements	59
	6.2.3	Comprehensive Data Collection Requirements	59
	6.2.4	Knowledge Factor	60
	6.2.4.1	General	60
	6.2.4.2	Linear Procedures	60
	6.2.4.3	Nonlinear Procedures	60
	6.2.4.4	Assumed Values of the Knowledge Factor	60
	6.3	Tier 3 Evaluation Requirements	61
	6.4	Tier 3 Retrofit Requirements.	61

7	ANALYSIS PROCEDURES AND ACCEPTANCE CRITERIA	63
7.1	Scope	63
7.2	General Analysis Requirements	63
7.2.1	Analysis Procedures	63
7.2.2	Component Gravity Loads and Load Combinations	63
7.2.3	Mathematical Modeling	63
7.2.3.1	Basic Assumptions	63
7.2.3.2	Torsion	63
7.2.3.3	Primary and Secondary Components	64
7.2.3.4	Stiffness and Strength Assumptions	64
7.2.3.5	Foundation Modeling	64
7.2.3.6	Damping	64
7.2.4	Configuration	65
7.2.5	Multidirectional Seismic Effects	65
7.2.5.1	Concurrent Seismic Effects	65
7.2.5.2	Vertical Seismic Effects	65
7.2.6	P- Δ Effects	65
7.2.7	Soil-Structure Interaction	65
7.2.8	Overturning	66
7.2.8.1	Overturning Effects for Linear Procedures	66
7.2.8.2	Overturning Effects for Nonlinear Procedures	66
7.2.9	Diaphragms, Chords, Collectors, and Ties	66
7.2.9.1	Classification of Diaphragms	66
7.2.9.2	Mathematical Modeling	67
7.2.9.3	Diaphragm Chords	67
7.2.9.4	Diaphragm Collectors	67
7.2.9.5	Diaphragm Ties	67
7.2.10	Continuity	67
7.2.11	Structural Walls and Their Anchorage	67
7.2.11.1	Out-of-Plane Wall Anchorage to Diaphragms	67
7.2.11.2	Out-of-Plane Strength of Walls	68
7.2.12	Structures Sharing Common Elements	68
7.2.12.1	Interconnection	68
7.2.12.2	Separation	68
7.2.13	Building Separation	68
7.2.13.1	Minimum Separation	68
7.2.13.2	Separation Exceptions	69
7.2.14	Verification of Analysis Assumptions	69
7.3	Analysis Procedure Selection	69
7.3.1	Linear Procedures	69
7.3.1.1	Method to Determine Limitations on Use of Linear Procedures	69
7.3.1.2	Limitations on Use of the Linear Static Procedure	70
7.3.2	Nonlinear Procedures	70
7.3.2.1	Nonlinear Static Procedure (NSP)	70
7.3.2.2	Nonlinear Dynamic Procedure (NDP)	70
7.3.3	Alternative Rational Analysis	70
7.4	Analysis Procedures	71
7.4.1	Linear Static Procedure (LSP)	71
7.4.1.1	Basis of the Procedure	71
7.4.1.2	Period Determination for LSP	71
7.4.1.3	Determination of Forces and Deformations for LSP	71
7.4.1.4	Damping for LSP	73
7.4.2	Linear Dynamic Procedure (LDP)	73
7.4.2.1	Basis of the Procedure	73
7.4.2.2	Modeling and Analysis Considerations for LDP	73
7.4.2.3	Determination of Forces and Deformations for LDP	73
7.4.2.4	Damping for LDP	73
7.4.3	Nonlinear Static Procedure (NSP)	73
7.4.3.1	Basis of the Procedure	73
7.4.3.2	Modeling and Analysis Considerations for NSP	73
7.4.3.3	Determination of Forces, Displacements, and Deformations for NSP	74
7.4.3.4	Damping for NSP	76
7.4.4	Nonlinear Dynamic Procedure (NDP)	76
7.4.4.1	Basis of the Procedure	76
7.4.4.2	Modeling and Analysis Considerations for NDP	76

	7.4.4.3	Determination of Forces and Deformations for NDP	76
	7.4.4.4	Damping for NDP	76
7.5	Acceptance Criteria		76
	7.5.1	General Requirements	76
	7.5.1.1	Primary and Secondary Components	76
	7.5.1.2	Deformation-Controlled and Force-Controlled Actions	77
	7.5.1.3	Expected and Lower-Bound Strengths	77
	7.5.1.4	Material Properties	78
	7.5.1.5	Component Capacities	78
	7.5.2	Linear Procedures	78
	7.5.2.1	Forces and Deformations	78
	7.5.2.2	Acceptance Criteria for Linear Procedures	79
	7.5.3	Nonlinear Procedures	79
	7.5.3.1	Forces and Deformations	79
	7.5.3.2	Acceptance Criteria for Nonlinear Procedures	79
7.6	Alternative Modeling Parameters and Acceptance Criteria		80
	7.6.1	Experimental Setup	80
	7.6.2	Data Reduction and Reporting.	80
	7.6.3	Analysis Parameters and Acceptance Criteria for Subassemblies Based on Experimental Data	80
8	FOUNDATIONS AND GEOLOGIC SITE HAZARDS		83
8.1	Scope		83
8.2	Site Characterization		83
	8.2.1	Foundation Information	83
	8.2.1.1	Foundation Conditions	83
	8.2.1.2	Design Foundation Loads	83
	8.2.1.3	Load-Deformation Characteristics Under Seismic Loading.	83
	8.2.2	Seismic-Geologic Site Hazards	83
	8.2.2.1	Fault Rupture.	83
	8.2.2.2	Liquefaction	84
	8.2.2.3	Settlement of Nonliquefiable Soils.	85
	8.2.2.4	Landsliding.	85
	8.2.2.5	Flooding or Inundation.	85
8.3	Mitigation of Seismic-Geologic Site Hazards.		85
8.4	Foundation Strength and Stiffness.		85
	8.4.1	Expected Foundation Capacities.	86
	8.4.1.1	Prescriptive Expected Capacities.	86
	8.4.1.2	Site-Specific Capacities	86
	8.4.2	Load-Deformation Characteristics for Shallow Foundations	86
	8.4.2.1	Flexibility of Shallow Bearing Foundations.	86
	8.4.2.2	Soil Shear Modulus and Poisson's Ratio Parameters	86
	8.4.2.3	Shallow Footings Considered Rigid (Method 1)	87
	8.4.2.4	Shallow Footings Considered Rigid (Method 2)	89
	8.4.2.5	Shallow Foundations Not Rigid Relative to the Soil (Method 3)	91
	8.4.2.6	Shallow Foundation Lateral Load	92
	8.4.3	Pile Foundations	92
	8.4.3.1	Stiffness Parameters	93
	8.4.3.2	Capacity Parameters	93
	8.4.4	Drilled Shafts.	93
	8.4.5	Deep Foundation Acceptance Criteria.	93
	8.4.5.1	Linear Procedures	93
	8.4.5.2	Nonlinear Procedures	94
8.5	Soil-Structure Interaction Effects		94
	8.5.1	Kinematic Interaction	94
	8.5.1.1	Base Slab Averaging.	94
	8.5.1.2	Embedment.	94
	8.5.2	Foundation Damping Soil-Structure Interaction Effects	95
	8.5.2.1	Radiation Damping for Rectangular Foundations.	95
	8.5.2.2	Soil Hysteretic Damping.	96
8.6	Seismic Earth Pressure.		96
8.7	Foundation Retrofit.		97

9	STEEL AND IRON	99
9.1	Scope	99
9.2	Material Properties and Condition Assessment	99
9.2.1	General	99
9.2.2	Properties of In-Place Materials and Components	99
9.2.2.1	Material Properties	99
9.2.2.2	Component Properties	100
9.2.2.3	Test Methods to Quantify Properties	100
9.2.2.4	Minimum Number of Tests	101
9.2.2.5	Default Properties	103
9.2.3	Condition Assessment	103
9.2.3.1	General	103
9.2.3.2	Scope and Procedures	103
9.2.3.3	Basis for the Mathematical Building Model	105
9.2.4	Knowledge Factor	105
9.3	General Assumptions and Requirements	105
9.3.1	Stiffness	105
9.3.1.1	Use of Linear Procedures for Cold-Formed Steel Light-Frame Construction	105
9.3.1.2	Use of Nonlinear Procedures for Cold-Formed Steel Light-Frame Construction	105
9.3.2	Strength and Acceptance Criteria	105
9.3.2.1	General	105
9.3.2.2	Deformation-Controlled Actions	105
9.3.2.3	Force-Controlled Actions	106
9.3.2.4	Anchorage to Concrete.	106
9.3.3	Connection Requirements in Cold-Formed Steel Light-Frame Construction	106
9.3.4	Components Supporting Discontinuous Shear Walls in Cold-Formed Steel Light-Frame Construction	106
9.3.5	Retrofit Measures	106
9.3.5.1	Retrofit Measures for Structural Steel	106
9.3.5.2	Retrofit Measures for Cold-Formed Steel Light-Frame Construction.	106
9.4	Steel Moment Frames	106
9.4.1	General	106
9.4.2	Fully Restrained (FR) Moment Frames	106
9.4.2.1	General	106
9.4.2.2	Stiffness of FR Moment Frames.	107
9.4.2.3	Strength of FR Moment Frames.	109
9.4.2.4	Acceptance Criteria for FR Moment Frames	110
9.4.2.5	Retrofit Measures for FR Moment Frames	121
9.4.3	Partially Restrained (PR) Moment Frames	122
9.4.3.1	General	122
9.4.3.2	Stiffness of PR Moment Frames.	122
9.4.3.3	Strength of PR Moment Frames.	122
9.4.3.4	Acceptance Criteria for PR Moment Frames	124
9.4.3.5	Retrofit Measures for PR Moment Frames	124
9.5	Steel Braced Frames	124
9.5.1	General	124
9.5.2	Centrally Braced Frames	125
9.5.2.1	General	125
9.5.2.2	Stiffness of Centrally Braced Frames	125
9.5.2.3	Strength of Centrally Braced Frames	125
9.5.2.4	Acceptance Criteria for Centrally Braced Frames	125
9.5.2.5	Retrofit Measures for Centrally Braced Frames	126
9.5.3	Eccentrically Braced Frames.	126
9.5.3.1	General	126
9.5.3.2	Stiffness of Eccentrically Braced Frames	126
9.5.3.3	Strength of Eccentrically Braced Frames	126
9.5.3.4	Acceptance Criteria for Eccentrically Braced Frames.	127
9.5.3.5	Retrofit Measures.	127
9.5.4	Buckling-Restrained Braced Frames.	127
9.5.4.1	General	127
9.5.4.2	Stiffness of Buckling-Restrained Braced Frames	127
9.5.4.3	Strength of Buckling-Restrained Braced Frames	127
9.5.4.4	Acceptance Criteria for Buckling-Restrained Braced Frames.	128
9.5.4.5	Retrofit Measures for Buckling-Restrained Braced Frames.	128

9.5.5	Steel Plate Shear Walls	128
9.5.5.1	General	128
9.5.5.2	Stiffness of Steel Plate Shear Walls	128
9.5.5.3	Strength of Steel Plate Shear Walls	128
9.5.5.4	Acceptance Criteria for Steel Plate Shear Walls	129
9.5.5.5	Retrofit Measures for Steel Plate Shear Walls	129
9.6	Steel Frames with Infills	129
9.7	Cold-Formed Steel Light-Frame Construction, Shear Wall Systems	129
9.7.1	General	129
9.7.2	Types of Cold-Formed Steel Light-Frame Construction, Shear Wall Systems	129
9.7.2.1	Existing Cold-Formed Steel Light-Frame Shear Walls	129
9.7.2.2	Enhanced Cold-Formed Steel Light-Frame Shear Walls	129
9.7.2.3	New Cold-Formed Steel Light-Frame Shear Walls	129
9.7.3	Stiffness, Strength, Acceptance Criteria, and Connection Design for Cold-Formed Steel Light-Frame Construction Shear Wall Systems	129
9.7.3.1	Wood Structural Panels	129
9.7.3.2	Steel Sheet Sheathing	131
9.7.3.3	Gypsum Board Panel	132
9.7.3.4	Fiberboard Panels	132
9.7.3.5	Plaster on Metal Lath Shear Walls	132
9.8	Cold-Formed Steel Moment-Frame Systems	132
9.8.1	General	132
9.8.2	Types of Cold-Formed Steel Moment-Frame Systems	133
9.8.2.1	Existing Cold-Formed Steel Moment-Frame Systems	133
9.8.2.2	Enhanced Cold-Formed Steel Moment-Frame Systems	133
9.8.2.3	New Cold-Formed Steel Moment-Frame Systems	133
9.8.3	Stiffness, Strength, Acceptance Criteria, and Connection Design for Cold-Formed Steel Moment-Frame Systems	133
9.8.3.1	Generic Cold-Formed Steel Moment Connection	133
9.8.3.2	Cold-Formed Steel Special Bolted Moment Frame	134
9.9	Cold-Formed Steel Light-Frame Construction, Strap-Braced Wall Systems	135
9.9.1	General	135
9.9.2	Types of Cold-Formed Steel Light-Frame Construction with Strap-Braced Walls	135
9.9.2.1	Existing Cold-Formed Steel Light-Frame Construction with Strap-Braced Walls	135
9.9.2.2	Cold-Formed Steel Light-Frame Construction with Enhanced Strap-Braced Walls	135
9.9.2.3	Cold-Formed Steel Light-Frame Construction with New Strap-Braced Walls	135
9.9.3	Stiffness, Strength, Acceptance Criteria, and Connection Design for Cold-Formed Steel Light-Frame Construction with Strap-Braced Walls	135
9.9.3.1	Stiffness	135
9.9.3.2	Strength	135
9.9.3.3	Acceptance Criteria	135
9.9.3.4	Connections	135
9.10	Diaphragms	135
9.10.1	Bare Metal Deck Diaphragms	135
9.10.1.1	General	135
9.10.1.2	Stiffness of Bare Metal Deck Diaphragms	135
9.10.1.3	Strength of Bare Metal Deck Diaphragms	136
9.10.1.4	Acceptance Criteria for Bare Metal Deck Diaphragms	136
9.10.1.5	Retrofit Measures for Bare Metal Deck Diaphragms	136
9.10.2	Metal Deck Diaphragms with Structural Concrete Topping	136
9.10.2.1	General	136
9.10.2.2	Stiffness of Metal Deck Diaphragms with Structural Concrete Topping	136
9.10.2.3	Strength of Metal Deck Diaphragms with Structural Concrete Topping	136
9.10.2.4	Acceptance Criteria for Metal Deck Diaphragms with Structural Concrete Topping	136
9.10.2.5	Retrofit Measures for Metal Deck Diaphragms with Structural Concrete Topping	136
9.10.3	Metal Deck Diaphragms with Nonstructural Topping	136
9.10.3.1	General	136
9.10.3.2	Stiffness of Metal Deck Diaphragms with Nonstructural Topping	137
9.10.3.3	Strength of Metal Deck Diaphragms with Nonstructural Topping	137
9.10.3.4	Acceptance Criteria for Metal Deck Diaphragms with Nonstructural Topping	137

	9.10.3.5	Retrofit Measures for Metal Deck Diaphragms with Nonstructural Topping. . .	137
9.10.4		Horizontal Steel Bracing (Steel Truss Diaphragms)	137
	9.10.4.1	General	137
	9.10.4.2	Stiffness of Steel Truss Diaphragms.	137
	9.10.4.3	Strength of Steel Truss Diaphragms.	137
	9.10.4.4	Acceptance Criteria for Steel Truss Diaphragms	137
	9.10.4.5	Retrofit Measures for Steel Truss Diaphragms	137
9.10.5		Archaic Diaphragms	138
	9.10.5.1	General	138
	9.10.5.2	Stiffness of Archaic Diaphragms	138
	9.10.5.3	Strength of Archaic Diaphragms.	138
	9.10.5.4	Acceptance Criteria for Archaic Diaphragms	138
	9.10.5.5	Retrofit Measures for Archaic Diaphragms	138
9.10.6		Chord and Collector Elements.	138
	9.10.6.1	General	138
	9.10.6.2	Stiffness of Chord and Collector Elements	138
	9.10.6.3	Strength of Chord and Collector Elements	138
	9.10.6.4	Acceptance Criteria for Chord and Collector Elements.	138
	9.10.6.5	Retrofit Measures for Chord and Collector Elements	138
9.11		Steel Pile Foundations	138
	9.11.1	General	138
	9.11.2	Stiffness of Steel Pile Foundations	138
	9.11.3	Strength of Steel Pile Foundations	139
	9.11.4	Acceptance Criteria for Steel Pile Foundations	139
	9.11.5	Retrofit Measures for Steel Pile Foundations	139
9.12		Cast and Wrought Iron.	139
	9.12.1	General	139
	9.12.2	Stiffness of Cast and Wrought Iron	139
	9.12.3	Strength and Acceptance Criteria for Cast and Wrought Iron	139
10		CONCRETE	141
	10.1	Scope.	141
	10.2	Material Properties and Condition Assessment	141
		10.2.1 General	141
		10.2.2 Properties of In-Place Materials and Components	141
		10.2.2.1 Material Properties	141
		10.2.2.2 Component Properties	141
		10.2.2.3 Test Methods to Quantify Material Properties	141
		10.2.2.4 Minimum Number of Tests	142
		10.2.2.5 Default Properties	143
		10.2.3 Condition Assessment	144
		10.2.3.1 General	144
		10.2.3.2 Scope and Procedures	144
		10.2.3.3 Basis for the Mathematical Building Model	146
		10.2.4 Knowledge Factor	146
	10.3	General Assumptions and Requirements	146
		10.3.1 Modeling and Design	146
		10.3.1.1 General	146
		10.3.1.2 Stiffness	146
		10.3.1.3 Flanged Construction.	147
		10.3.2 Strength and Deformability	147
		10.3.2.1 General	147
		10.3.2.2 Deformation-Controlled Actions.	148
		10.3.2.3 Force-Controlled Actions	148
		10.3.2.4 Component Ductility Demand Classification	148
		10.3.3 Flexure and Axial Loads.	148
		10.3.3.1 Usable Strain Limits	149
		10.3.4 Shear and Torsion	149
		10.3.5 Development and Splices of Reinforcement	149
		10.3.6 Connections to Existing Concrete	152
		10.3.6.1 Cast-in-Place Systems	152
		10.3.6.2 Postinstalled Anchors	152
		10.3.7 Retrofit Measures	152
	10.4	Concrete Moment Frames	153

10.4.1	Types of Concrete Moment Frames	153
10.4.1.1	Reinforced Concrete Beam–Column Moment Frames	153
10.4.1.2	Post-tensioned Concrete Beam–Column Moment Frames	153
10.4.1.3	Slab–Column Moment Frames.	153
10.4.2	Reinforced Concrete Beam–Column Moment Frames	153
10.4.2.1	General	153
10.4.2.2	Stiffness of Reinforced Concrete Beam–Column Moment Frames.	153
10.4.2.3	Strength of Reinforced Concrete Beam–Column Moment Frames	154
10.4.2.4	Acceptance Criteria for Reinforced Concrete Beam–Column Moment Frames	156
10.4.2.5	Retrofit Measures for Reinforced Concrete Beam–Column Moment Frames	159
10.4.3	Post-tensioned Concrete Beam–Column Moment Frames	159
10.4.3.1	General	159
10.4.3.2	Stiffness of Post-tensioned Concrete Beam–Column Moment Frames	160
10.4.3.3	Strength of Post-tensioned Concrete Beam–Column Moment Frames	160
10.4.3.4	Acceptance Criteria for Post-tensioned Concrete Beam–Column Moment Frames	161
10.4.3.5	Retrofit Measures for Post-tensioned Concrete Beam–Column Moment Frames	161
10.4.4	Slab–Column Moment Frames	161
10.4.4.1	General	161
10.4.4.2	Stiffness of Slab–Column Moment Frames	161
10.4.4.3	Strength of Slab–Column Moment Frames	161
10.4.4.4	Acceptance Criteria for Slab–Column Moment Frames.	161
10.4.4.5	Retrofit Measures for Slab–Column Moment Frames.	163
10.5	Precast Concrete Frames	164
10.5.1	Types of Precast Concrete Frames	164
10.5.1.1	Precast Concrete Frames Expected to Resist Seismic Forces.	164
10.5.1.2	Precast Concrete Frames Not Expected to Resist Seismic Forces Directly	164
10.5.2	Precast Concrete Frames Expected to Resist Seismic Forces.	164
10.5.2.1	General	164
10.5.2.2	Stiffness of Precast Concrete Frames Expected to Resist Seismic Forces	164
10.5.2.3	Strength of Precast Concrete Frames Expected to Resist Seismic Forces	164
10.5.2.4	Acceptance Criteria for Precast Concrete Frames Expected to Resist Seismic Forces	164
10.5.2.5	Retrofit Measures for Precast Concrete Frames Expected to Resist Seismic Forces	164
10.5.3	Precast Concrete Frames Not Expected to Resist Seismic Forces Directly	164
10.5.3.1	General	164
10.5.3.2	Stiffness of Precast Concrete Frames Not Expected to Resist Seismic Forces Directly	164
10.5.3.3	Strength of Precast Concrete Frames Not Expected to Resist Seismic Forces Directly	164
10.5.3.4	Acceptance Criteria for Precast Concrete Frames Not Expected to Resist Seismic Forces Directly	164
10.5.3.5	Retrofit Measures for Precast Concrete Frames Not Expected to Resist Seismic Forces Directly	164
10.6	Concrete Frames with Infills.	164
10.6.1	Types of Concrete Frames with Infills	164
10.6.1.1	Types of Frames	164
10.6.1.2	Masonry Infills	165
10.6.1.3	Concrete Infills	165
10.6.2	Concrete Frames with Masonry Infills	165
10.6.2.1	General	165
10.6.2.2	Stiffness of Concrete Frames with Masonry Infills	165
10.6.2.3	Strength of Concrete Frames with Masonry Infills	165
10.6.2.4	Acceptance Criteria for Concrete Frames with Masonry Infills.	165
10.6.2.5	Retrofit Measures for Concrete Frames with Masonry Infills.	167
10.6.3	Concrete Frames with Concrete Infills	167
10.6.3.1	General	167
10.6.3.2	Stiffness of Concrete Frames with Concrete Infills	167
10.6.3.3	Strength of Concrete Frames with Concrete Infills	167
10.6.3.4	Acceptance Criteria for Concrete Frames with Concrete Infills	167
10.6.3.5	Retrofit Measures for Concrete Frames with Concrete Infills.	167
10.7	Concrete Structural Walls	167
10.7.1	Types of Concrete Structural Walls and Associated Components	167

	10.7.1.1	Monolithic Reinforced Concrete Structural Walls and Wall Segments	167
	10.7.1.2	Reinforced Concrete Columns Supporting Discontinuous Structural Walls	167
	10.7.1.3	Reinforced Concrete Coupling Beams	167
10.7.2		Reinforced Concrete Structural Walls, Wall Segments, and Coupling Beams	168
	10.7.2.1	General	168
	10.7.2.2	Stiffness of Reinforced Concrete Structural Walls, Wall Segments, and Coupling Beams	168
	10.7.2.3	Strength of Reinforced Concrete Structural Walls, Wall Segments, and Coupling Beams	168
	10.7.2.4	Acceptance Criteria for Reinforced Concrete Structural Walls, Wall Segments, and Coupling Beams	170
	10.7.2.5	Retrofit Measures for Reinforced Concrete Structural Walls, Wall Segments, and Coupling Beams	172
10.8		Precast Concrete Structural Walls	172
	10.8.1	Types of Precast Structural Walls	172
	10.8.1.1	Effectively Monolithic Construction	172
	10.8.1.2	Jointed Construction	172
	10.8.1.3	Tilt-Up Construction	172
	10.8.2	Precast Concrete Structural Walls and Wall Segments	172
	10.8.2.1	General	172
	10.8.2.2	Stiffness of Precast Concrete Structural Walls and Wall Segments	173
	10.8.2.3	Strength of Precast Concrete Structural Walls and Wall Segments	173
	10.8.2.4	Acceptance Criteria for Precast Concrete Structural Walls and Wall Segments	173
	10.8.2.5	Retrofit Measures for Precast Concrete Structural Walls and Wall Segments	174
10.9		Concrete Braced Frames	174
	10.9.1	Types of Concrete Braced Frames	174
	10.9.2	General	174
	10.9.3	Stiffness of Concrete-Braced Frames	174
	10.9.3.1	Linear Static and Dynamic Procedures	174
	10.9.3.2	Nonlinear Static Procedure	174
	10.9.3.3	Nonlinear Dynamic Procedure	174
	10.9.4	Strength of Concrete-Braced Frames	174
	10.9.5	Acceptance Criteria for Concrete-Braced Frames	174
	10.9.5.1	Linear Static and Dynamic Procedure	174
	10.9.5.2	Nonlinear Static and Dynamic Procedures	175
	10.9.6	Retrofit Measures for Concrete-Braced Frames	175
10.10		Cast-in-Place Concrete Diaphragms	175
	10.10.1	Components of Cast-in-Place Concrete Diaphragms	175
	10.10.1.1	Slabs	175
	10.10.1.2	Struts and Collectors	175
	10.10.1.3	Diaphragm Chords	175
	10.10.2	Analysis, Modeling, and Acceptance Criteria for Cast-in-Place Concrete Diaphragms	175
	10.10.2.1	General	175
	10.10.2.2	Stiffness of Cast-in-Place Concrete Diaphragms	175
	10.10.2.3	Strength of Cast-in-Place Concrete Diaphragms	175
	10.10.2.4	Acceptance Criteria for Cast-in-Place Concrete Diaphragms	175
	10.10.3	Retrofit Measures for Cast-in-Place Concrete Diaphragms	175
10.11		Precast Concrete Diaphragms	175
	10.11.1	Components of Precast Concrete Diaphragms	175
	10.11.2	Analysis, Modeling, and Acceptance Criteria for Precast Concrete Diaphragms	175
	10.11.3	Retrofit Measures for Precast Concrete Diaphragms	175
10.12		Concrete Foundations	176
	10.12.1.1	Shallow Concrete Foundations	176
	10.12.1.2	Deep Concrete Foundations	176
	10.12.2	Analysis of Existing Concrete Foundations	176
	10.12.3	Evaluation of Existing Condition	176
	10.12.4	Retrofit Measures for Concrete Foundations	176
11		MASONRY	177
	11.1	Scope	177
	11.2	Condition Assessment and Material Properties	177
	11.2.1	General	177
	11.2.2	Condition Assessment	177

	11.2.2.1	Visual Condition Assessment	177
	11.2.2.2	Comprehensive Condition Assessment	178
	11.2.2.3	Supplemental Tests.	178
	11.2.2.4	Condition Enhancement	178
	11.2.2.5	Pointing or Repointing of Unreinforced Masonry Walls	178
11.2.3		Properties of In-Place Materials and Components	178
	11.2.3.1	General	178
	11.2.3.2	Nominal or Specified Properties.	178
	11.2.3.3	Masonry Compressive Strength	178
	11.2.3.4	Masonry Elastic Modulus in Compression	178
	11.2.3.5	Masonry Flexural Tensile Strength	179
	11.2.3.6	Unreinforced Masonry Shear Strength.	179
	11.2.3.7	Masonry Shear Modulus.	180
	11.2.3.8	Steel Reinforcement Tensile Strength and Yield Properties	180
	11.2.3.9	Minimum Number of Tests	180
	11.2.3.10	Default Properties	180
11.2.4		Knowledge Factor	181
11.3		Masonry Walls	181
	11.3.1	Types of Masonry Walls.	181
	11.3.1.1	Existing Masonry Walls	181
	11.3.1.2	New Masonry Walls	181
	11.3.1.3	Retrofitted Masonry Walls.	182
11.3.2		Unreinforced Masonry (URM) Walls and Wall Piers Subject to In-Plane Actions	182
	11.3.2.1	Stiffness of URM Walls and Wall Piers Subject to In-Plane Actions	182
	11.3.2.2	Strength of URM Walls Subject to In-Plane Actions.	182
	11.3.2.3	Acceptance Criteria for URM In-Plane Actions.	184
11.3.3		Unreinforced Masonry Walls Subject to Out-of-Plane Actions.	187
	11.3.3.1	Stiffness of URM Walls Subject to Out-of-Plane Actions	187
	11.3.3.2	Strength of URM Walls Subject to Out-of-Plane Actions	187
	11.3.3.3	Acceptance Criteria for URM Walls Subject to Out-of-Plane Actions.	187
11.3.4		Reinforced Masonry Walls and Wall Piers In-Plane Actions.	188
	11.3.4.1	Stiffness of Reinforced Masonry Walls and Wall Piers In-Plane Actions	188
	11.3.4.2	Strength of Reinforced Masonry Walls and Wall Piers In-Plane Actions	188
	11.3.4.3	Acceptance Criteria for In-Plane Actions of Reinforced Masonry Walls.	188
11.3.5		Reinforced Masonry Wall Out-of-Plane Actions	188
	11.3.5.1	Stiffness—Reinforced Masonry Wall Out-of-Plane Actions	188
	11.3.5.2	Strength—Reinforced Masonry Wall Out-of-Plane Actions	188
	11.3.5.3	Acceptance Criteria for Reinforced Masonry Wall Out-of-Plane Actions	189
11.4		Masonry Infills.	189
	11.4.1	Types of Masonry Infills.	190
	11.4.1.1	Existing Masonry Infills	190
	11.4.1.2	New Masonry Infills	191
	11.4.1.3	Retrofitted Masonry Infills.	191
11.4.2		Masonry Infill In-Plane Actions	191
	11.4.2.1	Stiffness—Masonry Infill In-Plane Actions	191
	11.4.2.2	Stiffness—Masonry Infill with Openings In-Plane Actions.	191
	11.4.2.3	Strength—Infilled Reinforced Concrete Frames In-Plane Actions	191
	11.4.2.4	Strength—Infilled Steel Frames In-Plane Actions.	193
	11.4.2.5	Drift—Infill Wall In-Plane Actions	193
	11.4.2.6	Strut Model for Infill In-Plane Actions	194
	11.4.2.7	Acceptance Criteria for Infill Wall In-Plane Actions	194
11.4.3		Masonry Infill Wall Out-of-Plane Actions	195
	11.4.3.1	Stiffness—Infill Wall Out-of-Plane Actions	195
	11.4.3.2	Strength—Infill Wall Out-of-Plane Actions	195
	11.4.3.3	Strength—Infill Wall In-Plane and Out-of-Plane Interaction	196
	11.4.3.4	Acceptance Criteria—Infill Wall Out-of-Plane Actions.	196
11.5		Anchorage to Masonry Walls	196
	11.5.1	Types of Anchors	196
	11.5.2	Analysis of Anchors	196
	11.5.3	Quality Assurance for Anchors in Masonry Walls	196
11.6		Masonry Foundation Elements.	197
	11.6.1	Types of Masonry Foundations	197
	11.6.2	Seismic Evaluation of Existing Masonry Foundations	197
	11.6.3	Foundation Retrofit Measures	197

12	WOOD LIGHT FRAME.	199
12.1	Scope	199
12.2	Material Properties and Condition Assessment	199
12.2.1	General	199
12.2.2	Properties of In-Place Materials and Components	199
12.2.2.1	Material Properties	199
12.2.2.2	Component Properties	199
12.2.2.3	Test Methods to Quantify Material Properties	200
12.2.2.4	Minimum Number of Tests	200
12.2.2.5	Default Properties	200
12.2.3	Condition Assessment	201
12.2.3.1	General	201
12.2.3.2	Scope and Procedures for Condition Assessment.	201
12.2.3.3	Basis for the Mathematical Building Model	202
12.2.4	Knowledge Factor	202
12.2.4.1	Wood Components and Assemblies	202
12.3	General Assumptions and Requirements	202
12.3.1	Stiffness	202
12.3.1.1	Use of Linear Procedures	202
12.3.1.2	Use of Nonlinear Procedures for Wood Construction	202
12.3.2	Strength and Acceptance Criteria	202
12.3.2.1	General	202
12.3.2.2	Deformation-Controlled Actions.	202
12.3.2.3	Force-Controlled Actions	202
12.3.3	Connection Requirements	203
12.3.3.1	Wood Construction.	203
12.3.4	Components Supporting Discontinuous Shear Walls	203
12.3.4.1	Wood Construction.	203
12.3.5	Retrofit Measures	203
12.3.5.1	Wood Construction.	203
12.4	Wood Light-Frame Shear Walls	203
12.4.1	General	203
12.4.2	Types of Wood Frame Shear Walls	203
12.4.2.1	Existing Wood Frame Shear Walls	203
12.4.2.2	Enhanced Wood Frame Shear Walls	204
12.4.2.3	New Wood Frame Shear Walls	204
12.4.3	Stiffness, Strength, Acceptance Criteria, and Connection Design for Wood Frame Shear Walls	204
12.4.3.1	Single-Layer Horizontal Lumber Sheathing or Siding Shear Walls	204
12.4.3.2	Diagonal Lumber Sheathing Shear Walls	204
12.4.3.3	Vertical Wood Siding Shear Walls	204
12.4.3.4	Wood Siding over Horizontal Sheathing Shear Walls	206
12.4.3.5	Wood Siding over Diagonal Sheathing Shear Walls	206
12.4.3.6	Wood Structural Panel Sheathing or Siding Shear Walls.	206
12.4.3.7	Stucco on Studs, Sheathing, or Fiberboard Shear Walls	208
12.4.3.8	Gypsum Plaster on Wood Lath Shear Walls	208
12.4.3.9	Gypsum Plaster on Gypsum Lath Shear Walls	209
12.4.3.10	Gypsum Wallboard or Drywall Shear Walls	209
12.4.3.11	Gypsum Sheathing Shear Walls	209
12.4.3.12	Plaster on Metal Lath Shear Walls	209
12.4.3.13	Horizontal Lumber Sheathing with Cut-In Braces or Diagonal Blocking Shear Walls	209
12.4.3.14	Fiberboard or Particleboard Sheathing Shear Walls.	210
12.5	Wood Diaphragms	210
12.5.1	General	210
12.5.2	Types of Wood Diaphragms.	210
12.5.2.1	Existing Wood Diaphragms	210
12.5.2.2	Enhanced Wood Diaphragms	210
12.5.2.3	New Wood Diaphragms	210
12.5.3	Stiffness, Strength, Acceptance Criteria, and Connection Design for Wood Diaphragms	210
12.5.3.1	Single Straight Sheathing Diaphragms	210
12.5.3.2	Double Straight Sheathing Diaphragms	211
12.5.3.3	Single Diagonal Sheathing Diaphragms.	211
12.5.3.4	Diagonal Sheathing with Straight Sheathing or Flooring above Diaphragms	211
12.5.3.5	Double Diagonal Sheathing Diaphragms	211

	12.5.3.6	Wood Structural Panel Sheathing Diaphragm	211
	12.5.3.7	Wood Structural Panel Overlays on Straight or Diagonal Sheathing Diaphragms	212
	12.5.3.8	Wood Structural Panel Overlays on Existing Wood Structural Panel Sheathing Diaphragms	212
	12.5.3.9	Braced Horizontal Diaphragms	213
12.6		Wood Foundations	213
	12.6.1	Types of Wood Foundations	213
	12.6.2	Analysis, Strength, and Acceptance Criteria for Wood Foundations	213
	12.6.3	Retrofit Measures for Wood Foundations	213
12.7		Other Wood Elements and Components	213
	12.7.1	General	213
	12.7.1.1	Stiffness of Other Wood Elements and Components	213
	12.7.1.2	Strength of Other Wood Elements and Components	213
	12.7.1.3	Acceptance Criteria for Other Wood Elements and Components	213
13		ARCHITECTURAL, MECHANICAL, AND ELECTRICAL COMPONENTS	215
13.1		Scope	215
13.2		Evaluation and Retrofit Procedure for Nonstructural Components	215
	13.2.1	Data Collection and Condition Assessment	215
	13.2.2	Classification of Acceleration-Sensitive and Deformation-Sensitive Components	218
13.3		Component Evaluation	218
13.4		Evaluation and Retrofit Procedures	218
	13.4.1	Analytical Procedure	218
	13.4.2	Prescriptive Proced.	218
	13.4.3	Force Analysis: General Equations	218
	13.4.3.1	Horizontal Seismic Forces	218
	13.4.3.2	Vertical Seismic Forces	219
	13.4.3.3	Load Combinations	219
	13.4.4	Deformation Analysis	219
	13.4.5	Component Testing	219
	13.4.6	Testing Requirements for Evaluating the Performance of Existing Attachments for Nonstructural Components	219
	13.4.6.1	Components Evaluated to the Operational Performance Level	220
	13.4.6.2	Components Evaluated to the Position Retention or Life Safety Performance Level	220
	13.4.6.3	Tension Testing Procedure	221
	13.4.6.4	Torque Testing Procedure	221
	13.4.6.5	Alternate Test Criteria	221
	13.4.6.6	Shear Capacity of Existing Anchors	221
13.5		Retrofit Approaches	221
13.6		Architectural Components: Definition, Behavior, and Acceptance Criteria	221
	13.6.1	Exterior Wall Components	221
	13.6.1.1	Adhered Veneer	221
	13.6.1.2	Anchored Veneer	222
	13.6.1.3	Glass Block Units and Other Nonstructural Masonry	222
	13.6.1.4	Prefabricated Panels	223
	13.6.1.5	Glazed Exterior Wall Systems	223
	13.6.2	Partitions	224
	13.6.2.1	Definition and Scope	224
	13.6.2.2	Component Behavior and Retrofit Methods	224
	13.6.2.3	Acceptance Criteria	224
	13.6.2.4	Evaluation Requirements	225
	13.6.3	Interior Veneers	225
	13.6.3.1	Definition and Scope	225
	13.6.3.2	Component Behavior and Retrofit Methods	225
	13.6.3.3	Acceptance Criteria	225
	13.6.3.4	Evaluation Requirements	225
	13.6.4	Ceilings	225
	13.6.4.1	Definition and Scope	225
	13.6.4.2	Component Behavior and Retrofit Methods	225
	13.6.4.3	Acceptance Criteria	225
	13.6.4.4	Evaluation Requirements	226
	13.6.5	Parapets and Cornices	226

	13.6.5.1	Definition and Scope.	226
	13.6.5.2	Component Behavior and Retrofit Methods.	226
	13.6.5.3	Acceptance Criteria	226
	13.6.5.4	Evaluation Requirements.	226
13.6.6		Architectural Appendages and Marquees	226
	13.6.6.1	Definition and Scope.	226
	13.6.6.2	Component Behavior and Retrofit Methods.	226
	13.6.6.3	Acceptance Criteria	226
	13.6.6.4	Evaluation Requirements.	226
13.6.7		Chimneys and Stacks	226
	13.6.7.1	Definition and Scope.	226
	13.6.7.2	Component Behavior and Retrofit Methods.	226
	13.6.7.3	Acceptance Criteria	226
	13.6.7.4	Evaluation Requirements.	227
13.6.8		Stairs and Ramps.	227
	13.6.8.1	Definition and Scope.	227
	13.6.8.2	Component Behavior and Retrofit Methods.	227
	13.6.8.3	Acceptance Criteria	227
	13.6.8.4	Evaluation Requirements.	227
13.6.9		Doors Required for Emergency Services Egress in Essential Facilities	227
	13.6.9.1	Definition and Scope.	227
	13.6.9.2	Component Behavior and Retrofit Methods.	227
	13.6.9.3	Acceptance Criteria	227
	13.6.9.4	Evaluation Requirements.	228
13.6.10		Computer Access Floors	228
	13.6.10.1	Definition and Scope.	228
	13.6.10.2	Component Behavior and Retrofit Methods.	228
	13.6.10.3	Acceptance Criteria	228
	13.6.10.4	Evaluation Requirements.	228
13.7		Mechanical, Electrical, and Plumbing Components: Definition, Behavior, and Acceptance Criteria	228
	13.7.1	Mechanical Equipment.	228
	13.7.1.1	Definition and Scope.	228
	13.7.1.2	Component Behavior and Retrofit Methods.	228
	13.7.1.3	Acceptance Criteria	228
	13.7.1.4	Evaluation Requirements.	229
	13.7.2	Storage Vessels and Water Heaters	229
	13.7.2.1	Definition and Scope.	229
	13.7.2.2	Component Behavior and Retrofit Methods.	229
	13.7.2.3	Acceptance Criteria	229
	13.7.2.4	Evaluation Requirements.	229
	13.7.3	Pressure Piping.	229
	13.7.3.1	Definition and Scope.	229
	13.7.3.2	Component Behavior and Retrofit Methods.	229
	13.7.3.3	Acceptance Criteria	229
	13.7.3.4	Evaluation Requirements.	230
	13.7.4	Fire Suppression Piping	230
	13.7.4.1	Definition and Scope.	230
	13.7.4.2	Component Behavior and Retrofit Methods.	230
	13.7.4.3	Acceptance Criteria	230
	13.7.4.4	Evaluation Requirements.	230
	13.7.5	Fluid Piping Other Than Fire Suppression	230
	13.7.5.1	Definition and Scope.	230
	13.7.5.2	Component Behavior and Retrofit Methods.	230
	13.7.5.3	Acceptance Criteria	230
	13.7.5.4	Evaluation Requirements.	231
	13.7.6	Ductwork.	231
	13.7.6.1	Definition and Scope.	231
	13.7.6.2	Component Behavior and Retrofit Methods.	231
	13.7.6.3	Acceptance Criteria	231
	13.7.6.4	Evaluation Requirements.	231
	13.7.7	Electrical and Communications Equipment	231
	13.7.7.1	Definition and Scope.	231
	13.7.7.2	Component Behavior and Retrofit Methods.	231
	13.7.7.3	Acceptance Criteria	231
	13.7.7.4	Evaluation Requirements.	232

13.7.8	Electrical and Communications Distribution Components	232
13.7.8.1	Definition and Scope.	232
13.7.8.2	Component Behavior and Retrofit Methods.	232
13.7.8.3	Acceptance Criteria	232
13.7.8.4	Evaluation Requirements.	232
13.7.9	Light Fixtures	232
13.7.9.1	Definition and Scope.	232
13.7.9.2	Component Behavior and Retrofit Methods.	232
13.7.9.3	Acceptance Criteria	232
13.7.9.4	Evaluation Requirements.	233
13.7.10	Rooftop Solar Photovoltaic Arrays	233
13.7.10.1	Definition and Scope.	233
13.7.10.2	Component Behavior and Retrofit Methods	233
13.7.10.3	Acceptance Criteria	233
13.7.10.4	Evaluation Requirements.	233
13.7.11	Elevators	233
13.7.11.1	Definition and Scope.	233
13.7.11.2	Component Behavior and Retrofit Methods.	233
13.7.11.3	Acceptance Criteria	233
13.7.11.4	Evaluation Requirements.	233
13.7.12	Conveyors	234
13.7.12.1	Definition and Scope.	234
13.7.12.2	Component Behavior and Retrofit Methods.	234
13.7.12.3	Acceptance Criteria	234
13.7.12.4	Evaluation Requirements.	234
13.8	Furnishings and Interior Equipment: Definition, Behavior, and Acceptance Criteria	234
13.8.1	Storage Racks	234
13.8.1.1	Definition and Scope.	234
13.8.1.2	Component Behavior and Retrofit Methods.	234
13.8.1.3	Acceptance Criteria	234
13.8.1.4	Evaluation Requirements.	234
13.8.2	Contents	234
13.8.2.1	Definition and Scope.	234
13.8.2.2	Component Behavior and Retrofit Methods.	234
13.8.2.3	Acceptance Criteria	234
13.8.2.4	Evaluation Requirements.	234
13.8.3	Hazardous Material Storage	234
13.8.3.1	Definition and Scope.	234
13.8.3.2	Component Behavior and Retrofit Methods	234
13.8.3.3	Acceptance Criteria	235
13.8.3.4	Evaluation Requirements.	235
13.8.4	Computer and Communication Racks	235
13.8.4.1	Definition and Scope.	235
13.8.4.2	Component Behavior and Retrofit Methods.	235
13.8.4.3	Acceptance Criteria	235
13.8.4.4	Evaluation Requirements.	235
14	SEISMIC ISOLATION.	237
14.1	Scope.	237
14.2	General Requirements	237
14.2.1	Introduction	237
14.2.2	Seismic Hazard.	237
14.2.2.1	Ground Motion Acceleration Histories	237
14.2.3	Detailed System Requirements	237
14.2.3.1	Wind Displacement	237
14.2.3.2	Fire Resistance	237
14.2.3.3	Lateral Restoring Force	237
14.2.3.4	Displacement Restraint.	237
14.2.3.5	Vertical Load Stability.	237
14.2.3.6	Overturning.	238
14.2.3.7	Inspection and Replacement	238
14.2.4	Structural System.	238
14.2.4.1	Horizontal Distribution of Force.	238
14.2.4.2	Building Separations	238

14.3	Seismic Isolation System Component Properties	238
14.3.1	General Requirements	238
14.3.2	Isolation System Component Types	238
14.3.3	Nominal Design Properties.	238
14.3.4	Bounding Properties of Isolation System Components	238
14.3.4.1	Specification Tolerance on Nominal Design Properties.	238
14.3.4.2	Testing Variations on Nominal Design Properties	238
14.3.4.3	Aging and Environmental Effects on Nominal Design Properties	239
14.3.5	Property Modification (λ) Factors	239
14.3.6	Upper- and Lower-Bound Design and Analysis Properties.	239
14.4	Isolation System Modeling.	239
14.4.1	Isolation Component Modeling	239
14.4.1.1	Upper-Bound and Lower-Bound Force–Deflection Behavior of Isolation System Components	239
14.4.1.2	Isolation System Properties	239
14.4.1.3	Isolator Models for Linear Procedures	240
14.4.1.4	Isolator Models for Nonlinear Procedures.	240
14.4.2	Isolation System and Superstructure Modeling	240
14.4.2.1	General	240
14.4.2.2	Isolation System Model	240
14.4.2.3	Superstructure Model	240
14.5	Analysis Procedures	240
14.5.1	Selection of Analysis Procedure.	240
14.5.1.1	Linear Static Procedure	240
14.5.1.2	Linear Dynamic Procedure.	241
14.5.1.3	Nonlinear Static Procedure.	241
14.5.1.4	Nonlinear Dynamic Procedure.	241
14.5.1.5	Design Forces and Deformations	241
14.5.2	Linear Static Procedure	241
14.5.2.1	General	241
14.5.2.2	Deformation Characteristics of the Isolation System	241
14.5.2.3	Minimum Lateral Displacements	241
14.5.2.4	Minimum Lateral Forces.	242
14.5.2.5	Vertical Distribution of Force	242
14.5.2.6	Design Forces and Deformations	243
14.5.3	Linear Dynamic Procedure.	243
14.5.3.1	General	243
14.5.3.2	Ground Motion Input	243
14.5.3.3	Response-Spectrum Analysis Procedure.	243
14.5.3.4	Isolation System and Structural Elements at or below the Base Level.	243
14.5.3.5	Structural Elements above the Base Level	243
14.5.3.6	Scaling of Results	243
14.5.3.7	Design Forces and Deformations	243
14.5.4	Nonlinear Static Procedure.	243
14.5.4.1	General	243
14.5.4.2	Target Displacement	243
14.5.4.3	Seismic Force Pattern	244
14.5.4.4	Design Forces and Deformations	244
14.5.5	Nonlinear Dynamic Procedure.	244
14.5.5.1	General	244
14.5.5.2	Minimum Lateral Displacements and Forces	244
14.5.5.3	Accidental Mass Eccentricity	244
14.5.5.4	Design Forces and Deformations	244
14.6	Nonstructural Components.	244
14.6.1	General	244
14.6.2	Components at or above the Isolation Interface.	244
14.6.3	Components Crossing the Isolation Interface	244
14.6.4	Components below the Isolation Interface	244
14.7	Isolation System Testing and Design Properties	244
14.7.1	General	244
14.7.2	Qualification Tests	244
14.7.3	Prototype Tests.	245
14.7.3.1	General	245
14.7.3.2	Record	245
14.7.3.3	Sequence and Cycles.	245

	14.7.3.4	Vertical-Load-Carrying Isolators	245
	14.7.3.5	Dynamic Testing	245
	14.7.3.6	Isolators Dependent on Bilateral Load	245
	14.7.3.7	Maximum and Minimum Vertical Load	246
	14.7.3.8	Sacrificial Wind-Restraint Systems	246
	14.7.3.9	Testing Similar Units	246
	14.7.4	Production Testing	246
	14.7.5	Determination of Force–Deflection Characteristics	246
	14.7.6	System Adequacy	247
14.8		Design Review	247
15		DESIGN REQUIREMENTS FOR STRUCTURES WITH SUPPLEMENTAL ENERGY DISSIPATION	249
15.1		Scope	249
15.2		General Design Requirements	249
	15.2.1	General Requirements	249
	15.2.2	Damping Device Requirements	249
	15.2.2.1	Device Classification	249
	15.2.2.2	Multiaxis Movement	249
	15.2.2.3	Inspection and Periodic Testing	249
	15.2.2.4	Performance Objectives and System Redundancy	249
15.3		Properties of Energy Dissipation Devices	250
	15.3.1	Nominal Design Properties	250
	15.3.2	Maximum and Minimum Damper Properties	250
15.4		Analysis Procedure Selection	250
	15.4.1	General Limitations for the Linear Analysis Procedures	250
15.5		Nonlinear Dynamic Procedures	250
	15.5.1	General Requirements	250
	15.5.2	Modeling of Energy Dissipation Devices	251
	15.5.2.1	Displacement-Dependent Devices	251
	15.5.2.2	Velocity-Dependent Devices	251
	15.5.2.3	Other Types of Devices	251
	15.5.3	Acceleration Histories	251
	15.5.4	Accidental Eccentricity	252
15.6		Detailed System Requirements	252
	15.6.1	General	252
	15.6.2	Wind Forces	252
	15.6.3	Inspection and Replacement	252
	15.6.4	Maintenance	252
15.7		Design Review	252
15.8		Required Tests of Energy Dissipation Devices	252
	15.8.1	Prototype Tests	252
	15.8.1.1	General	252
	15.8.1.2	Sequence and Cycles of Testing	252
	15.8.1.3	Testing Similar Devices	253
	15.8.1.4	Determination of Force–Velocity–Displacement Characteristics	253
	15.8.1.5	Device Adequacy	253
	15.8.2	Production Tests	254
15.9		Linear Analysis Procedures	254
	15.9.1	Modeling of Energy Dissipation Devices	254
	15.9.1.1	Displacement-Dependent Devices	254
	15.9.1.2	Velocity-Dependent Devices	254
	15.9.2	Linear Static Procedure	255
	15.9.2.1	Displacement-Dependent Devices	255
	15.9.2.2	Velocity-Dependent Devices	255
	15.9.2.3	Design Actions	255
	15.9.2.4	Linear Dynamic Procedure	256
	15.9.2.5	Displacement-Dependent Devices	256
	15.9.2.6	Velocity-Dependent Devices	256
15.10		Nonlinear Static Procedure	256
	15.10.1	Displacement-Dependent Devices	257
	15.10.2	Velocity-Dependent Devices	257
16		SYSTEM-SPECIFIC PERFORMANCE PROCEDURES	259
16.1		Scope	259

16.2	Special Procedure for Unreinforced Masonry	259
16.2.1	Scope	259
16.2.2	Condition of Existing Materials	259
16.2.2.1	Layup of Walls.	259
16.2.2.2	Testing	260
16.2.2.3	Masonry Strength	261
16.2.3	Analysis	261
16.2.3.1	Cross Walls.	262
16.2.3.2	Diaphragms.	262
16.2.3.3	Shear Walls.	263
16.2.3.4	Buildings with Open Fronts	264
16.2.3.5	New Vertical Elements.	264
16.2.4	Other Components and Systems of URM Buildings	265
16.2.4.1	References to Applicable Sections.	265
16.2.4.2	Out-of-Plane Demands	265
16.2.4.3	Wall Anchorage	265
16.2.4.4	Truss and Beam Supports	265
17	TIER 1 CHECKLISTS.	267
17.1	Basic Checklists	267
17.1.1	Very Low Seismicity Checklist	267
17.1.2	Basic Configuration Checklist	267
17.2	Structural Checklists for Building Types W1: Wood Light Frames and W1A: Multi-Story, Multi-Unit Residential Wood Frame.	267
17.3	Structural Checklists for Building Type W2: Wood Frames, Commercial and Industrial	267
17.4	Structural Checklists for Building Types S1: Steel Moment Frames with Stiff Diaphragms and S1A: Steel Moment Frames with Flexible Diaphragms	275
17.5	Structural Checklist for Building Types S2: Steel Braced Frames with Stiff Diaphragms and S2A: Steel Braced Frames with Flexible Diaphragms.	275
17.6	Structural Checklists for Building Type S3: Metal Building Frames.	281
17.7	Structural Checklists for Building Type S4: Dual Systems with Backup Steel Moment Frames and Stiff Diaphragms.	281
17.8	Structural Checklists for Building Types S5: Steel Frames with Infill Masonry Shear Walls and Stiff Diaphragms and S5A: Steel Frames with Infill Masonry Shear Walls and Flexible Diaphragms	288
17.9	Structural Checklists for Building Type CFS1: Cold-Formed Steel Lightframe Bearing Wall Construction, Shear Wall Lateral System.	288
17.10	Structural Checklists for Building Type CFS2: Cold-Formed Steel Lightframe Bearing Wall Construction, Strap-Braced Lateral Wall System.	292
17.11	Structural Checklists for Building Type C1: Concrete Moment Frames	295
17.12	Structural Checklist for Building Types C2: Concrete Shear Walls with Stiff Diaphragms and C2A: Concrete Shear Walls with Flexible Diaphragms	298
17.13	Structural Checklists for Building Types C3: Concrete Frames with Infill Masonry Shear Walls and C3A: Concrete Frames with Infill Masonry Shear Walls and Flexible Diaphragms	301
17.14	Structural Checklists for Building Types PC1: Precast or Tilt-Up Concrete Shear Walls with Flexible Diaphragms and PC1A: Precast or Tilt-Up Concrete Shear Walls with Stiff Diaphragms	301
17.15	Structural Checklists for Building Type PC2: Precast Concrete Frames with Shear Walls	307
17.16	Structural Checklists for Building Type PC2A: Precast Concrete Frames without Shear Walls	311
17.17	Structural Checklists for Building Types RM1: Reinforced Masonry Bearing Walls with Flexible Diaphragms and RM2: Reinforced Masonry Bearing Walls with Stiff Diaphragms.	311
17.18	Structural Checklists for Building Types URM: Unreinforced Masonry Bearing Walls with Flexible Diaphragms and URMA: Unreinforced Masonry Bearing Walls with Stiff Diaphragms	316
17.19	Nonstructural Checklist	318
18	REFERENCE DOCUMENTS	327
18.1	Consensus Standards and Other Reference Documents.	327
APPENDIX A	GUIDELINES FOR DEFICIENCY-BASED PROCEDURES	331
A.1	General	331
A.2	Procedures for Building Systems	331
A.2.1	General	331
A.2.1.1	Load Path.	331
A.2.1.2	Adjacent Buildings.	331
A.2.1.3	Mezzanines.	332

A.2.2	Configuration	332
A.2.2.1	General	332
A.2.2.2	Weak Story	333
A.2.2.3	Soft Story	333
A.2.2.4	Vertical Irregularities	334
A.2.2.5	Geometry	334
A.2.2.6	Mass	334
A.2.2.7	Torsion	334
A.2.3	Condition of Materials	335
A.2.3.1	Foundation Performance	336
A.2.3.2	Deterioration of Foundation Elements	336
A.2.3.3	Deterioration of Wood	336
A.2.3.4	Wood Structural Panel Shear Wall Fasteners	336
A.2.3.5	Deterioration of Steel	336
A.2.3.6	Deterioration of Concrete	336
A.2.3.7	Concrete Wall Cracks	336
A.2.3.8	Cracks in Infill Boundary Columns	336
A.2.3.9	Unreinforced Masonry Units	337
A.2.3.10	Unreinforced Masonry Joints	337
A.2.3.11	Unreinforced Masonry Wall Cracks	337
A.2.3.12	Infill Masonry Wall Cracks	337
A.2.3.13	Posttensioning Anchors	337
A.2.3.14	Precast Concrete Walls	337
A.2.3.15	Reinforced Masonry Wall Cracks	337
A.3	Procedures for Seismic-Force-Resisting Systems	338
A.3.1	Moment Frames	338
A.3.1.1	General	338
A.3.1.2	Moment Frames with Infill Walls	339
A.3.1.3	Steel Moment Frames	339
A.3.1.4	Concrete Moment Frames	341
A.3.1.5	Precast Concrete Moment Frames	343
A.3.1.6	Frames Not Part of the Seismic-Force-Resisting System	343
A.3.2	Shear Walls	344
A.3.2.1	General	344
A.3.2.2	Concrete Shear Walls	344
A.3.2.3	Precast Concrete Shear Walls	346
A.3.2.4	Reinforced Masonry Shear Walls	347
A.3.2.5	Unreinforced Masonry Shear Walls	347
A.3.2.6	Infill Walls in Frames	347
A.3.2.7	Walls in Wood Frame Buildings	348
A.3.2.8	Cold-Formed Steel Light-Frame Construction, Shear Wall Systems	350
A.3.3	Braced Frames	351
A.3.3.1	General	352
A.3.3.2	Centrally Braced Frames	353
A.3.3.3	Eccentrically Braced Frames	354
A.4	Procedures for Diaphragms	354
A.4.1	General	355
A.4.1.1	Diaphragm Continuity	356
A.4.1.2	Cross Ties	356
A.4.1.3	Roof Chord Continuity	356
A.4.1.4	Openings at Shear Walls	357
A.4.1.5	Openings at Frames	357
A.4.1.6	Openings at Exterior Masonry Shear Walls	357
A.4.1.7	Plan Irregularities	357
A.4.1.8	Diaphragm Reinforcement at Openings	357
A.4.2	Wood Diaphragms	358
A.4.2.1	Straight Sheathing	358
A.4.2.2	Spans	358
A.4.2.3	Diagonally Sheathed and Unblocked Diaphragms	358
A.4.3	Metal Deck Diaphragms	359
A.4.3.1	Nonconcrete Filled Diaphragms	359
A.4.4	Concrete Diaphragms	359
A.4.5	Precast Concrete Diaphragms	359
A.4.5.1	Topping Slab	359
A.4.6	Horizontal Bracing	359

	A.4.7	Other Diaphragms	359
	A.4.7.1	Other Diaphragms	359
A.5		Procedures for Connections	360
	A.5.1	Anchorage for Normal Forces	360
	A.5.1.1	Wall Anchorage	360
	A.5.1.2	Wood Ledgers	360
	A.5.1.3	Minimum Number of Wall Anchors Per Panel	360
	A.5.1.4	Stiffness of Wall Anchors	360
	A.5.2	Shear Transfer	361
	A.5.2.1	Transfer to Shear Walls or Concrete and Infill Frames	361
	A.5.2.2	Transfer to Steel Frames	361
	A.5.2.3	Topping Slab to Walls or Frames	361
	A.5.3	Vertical Components	361
	A.5.3.1	Steel Columns	361
	A.5.3.2	Concrete Columns	362
	A.5.3.3	Wood or Cold-Formed Steel Posts	362
	A.5.3.4	Wood Sills and Cold-Formed Steel Base Tracks	362
	A.5.3.5	Foundation Dowels	362
	A.5.3.6	Precast Wall Panels	362
	A.5.3.7	Wood Sill and Cold-Formed Steel Base Track Bolts	362
	A.5.3.8	Uplift at Pile Caps	363
	A.5.4	Interconnection of Elements	363
	A.5.4.1	Girder–Column Connection	363
	A.5.4.2	Girders	363
	A.5.4.3	Corbel Bearing	363
	A.5.4.4	Corbel Connections	363
	A.5.4.5	Beam, Girder, and Truss Supports	363
	A.5.5	Panel Connections	363
	A.5.5.1	Roof Panels	363
	A.5.5.2	Wall Panels	364
A.6		Procedures for Geologic Site Hazards and Foundations	364
	A.6.1	Geologic Site Hazards	364
	A.6.1.1	Liquefaction	364
	A.6.1.2	Slope Failure	364
	A.6.1.3	Surface Fault Rupture	364
	A.6.2	Foundation Configuration	364
	A.6.2.1	Overturning	364
	A.6.2.2	Ties between Foundation Elements	365
	A.6.2.3	Deep Foundations	365
	A.6.2.4	Sloping Sites	365
A.7		Procedures for Nonstructural Components	365
	A.7.1	Partitions	365
	A.7.1.1	Unreinforced Masonry	365
	A.7.1.2	Drift	366
	A.7.1.3	Structural Separations	366
	A.7.1.4	Tops	366
	A.7.2	Ceiling Systems	366
	A.7.2.1	Heavy or Light Partitions Supported by Ceilings	366
	A.7.2.2	Integrated Ceilings	366
	A.7.2.3	Suspended Lath and Plaster or Gypsum Board	366
	A.7.2.4	Edge Clearance	366
	A.7.2.5	Continuity across Structure	366
	A.7.2.6	Edge Support	366
	A.7.2.7	Seismic Joints	366
	A.7.3	Light Fixtures	366
	A.7.3.1	Emergency Lighting	366
	A.7.3.2	Independent Support	366
	A.7.3.3	Pendant Supports	367
	A.7.3.4	Lens Covers	367
	A.7.4	Cladding and Glazing	367
	A.7.4.1	Cladding Anchors	367
	A.7.4.2	Cladding Connection Deterioration	367
	A.7.4.3	Cladding Isolation	367
	A.7.4.4	Multistory Panels	367
	A.7.4.5	Panel Connections	367

	A.7.4.6	Bearing Connections	368
	A.7.4.7	Inserts	368
	A.7.4.8	Glazing	368
	A.7.4.9	Threaded Rods	368
A.7.5		Masonry Veneer	368
	A.7.5.1	Ties	368
	A.7.5.2	Shelf Angles	368
	A.7.5.3	Weakened Planes	368
	A.7.5.4	Masonry Veneer Deterioration	368
	A.7.5.5	Mortar	368
	A.7.5.6	Weep Holes	368
	A.7.5.7	Stone Cracks	368
A.7.6		Metal Stud Backup Systems	369
	A.7.6.1	Stud Tracks	369
	A.7.6.2	Openings	369
A.7.7		Concrete Block and Masonry Backup Systems	369
	A.7.7.1	Anchorage	369
	A.7.7.2	Unreinforced Masonry Backup	369
A.7.8		Parapets, Cornices, Ornamentation, and Appendages	369
	A.7.8.1	Unreinforced Masonry Parapets or Cornices	369
	A.7.8.2	Canopies	369
	A.7.8.3	Concrete Parapets	369
	A.7.8.4	Appendages	369
A.7.9		Masonry Chimneys	369
	A.7.9.1	Unreinforced Masonry Chimneys	369
	A.7.9.2	Anchorage	369
A.7.10		Stairs	369
	A.7.10.1	Stair Enclosures	369
	A.7.10.2	Stair Details	370
A.7.11		Building Contents and Furnishing	370
	A.7.11.1	Industrial Storage Racks	370
	A.7.11.2	Tall, Narrow Contents	370
	A.7.11.3	Fall-Prone Contents	370
	A.7.11.4	Access Floors	370
	A.7.11.5	Equipment on Access Floors	370
	A.7.11.6	Suspended Contents	370
A.7.12		Mechanical and Electrical Equipment	370
	A.7.12.1	Emergency Power	370
	A.7.12.2	Hazardous Material Equipment	370
	A.7.12.3	Equipment Support Deterioration	370
	A.7.12.4	Fall-Prone Equipment	370
	A.7.12.5	In-Line Equipment	370
	A.7.12.6	Tall, Narrow Equipment	371
	A.7.12.7	Mechanical Doors	371
	A.7.12.8	Suspended Equipment	371
	A.7.12.9	Vibration Isolators	371
	A.7.12.10	Heavy Equipment	371
	A.7.12.11	Electrical Equipment	371
	A.7.12.12	Conduit Couplings	371
A.7.13		Piping	371
	A.7.13.1	Fire Suppression Piping	371
	A.7.13.2	Flexible Couplings	371
	A.7.13.3	Sprinkler Ceiling Clearance	371
	A.7.13.4	Fluid and Gas Piping	371
	A.7.13.5	C-Clamps	372
	A.7.13.6	Piping Crossing Seismic Joints	372
A.7.14		Ducts	372
	A.7.14.1	Stair and Smoke Ducts	372
	A.7.14.2	Duct Bracing	372
	A.7.14.3	Duct Support	372
	A.7.14.4	Ducts Crossing Seismic Joints	372
A.7.15		Hazardous Materials	372
	A.7.15.1	Hazardous Material Storage	372
	A.7.15.2	Shutoff Valves	372
	A.7.15.3	Shutoff Valves	372

	A.7.15.4	Flexible Couplings	373	
A.7.16		Elevators	373	
	A.7.16.1	Retainer Guards	373	
	A.7.16.2	Retainer Plate.	373	
	A.7.16.3	Elevator Equipment	373	
	A.7.16.4	Seismic Switch	373	
	A.7.16.5	Shaft Walls	373	
	A.7.16.6	Counterweight Rails	373	
	A.7.16.7	Brackets	373	
	A.7.16.8	Spreader Bracket	373	
	A.7.16.9	Go-Slow Elevators	373	
APPENDIX B	APPLYING ASCE 41 IN BUILDING CODES, REGULATORY POLICIES, AND MITIGATION PROGRAMS		375	
B.1	Introduction.		375	
B.2	Mandatory Mitigation		375	
	B.2.1	Performance Objectives	376	
	B.2.2	Implementation Issues	377	
	B.2.3	Historic Buildings	377	
	B.2.4	Example Programs	377	
B.3	Voluntary Mitigation.		378	
	B.3.1	Performance Objectives	378	
	B.3.2	Implementation Issues	378	
	B.3.3	Historic Buildings	379	
	B.3.4	Example Programs	379	
B.4	Triggered Mitigation		379	
	B.4.1	Performance Objectives	379	
	B.4.2	Implementation Issues	380	
	B.4.3	Historic Buildings	380	
	B.4.4	Example Programs	380	
APPENDIX C	SUMMARY DATA SHEET		383	
COMMENTARY TO STANDARD ASCE/SEI 41-17				
C1	GENERAL REQUIREMENTS		385	
	C1.1	Scope	385	
	C1.3	Evaluation and Retrofit Process	387	
	C1.4	Seismic Evaluation Process	387	
		C1.4.1 Selection of Performance Objective	389	
		C1.4.3 As-Built Information	389	
		C1.4.4 Evaluation Procedures	389	
		C1.4.5 Evaluation Report	389	
	C1.5	Seismic Retrofit Process	389	
		C1.5.1 Initial Considerations.	391	
		C1.5.2 Selection of Performance Objective	391	
		C1.5.5 Retrofit Procedures.	391	
		C1.5.6 Retrofit Strategies	392	
		C1.5.7 Retrofit Measures	393	
		C1.5.8 Verification of Retrofit Design.	393	
		C1.5.9 Construction Documents	393	
		C1.5.10 Construction Quality Assurance	393	
			C1.5.10.1 Construction Quality Assurance Plan	393
			C1.5.10.3 Responsibilities of the Authority Having Jurisdiction.	393
C2	PERFORMANCE OBJECTIVES AND SEISMIC HAZARDS.		395	
	C2.2	Performance Objectives	395	
		C2.2.1 Basic Performance Objective for Existing Buildings (BPOE)	395	
		C2.2.2 Enhanced Performance Objectives.	398	
		C2.2.3 Limited Performance Objectives.	398	
		C2.2.4 Basic Performance Objective Equivalent to New Building Standards (BPON)	398	

	C2.2.5	Partial Retrofit	398
	C2.2.6	System-Specific Performance Procedures	398
C2.3		Target Building Performance Levels	398
	C2.3.1	Structural Performance Levels and Ranges	400
		C2.3.1.1 Immediate Occupancy Structural Performance Level (S-1)	400
		C2.3.1.2 Enhanced Safety Structural Performance Range	400
		C2.3.1.3 Life Safety Structural Performance Level (S-3)	400
		C2.3.1.4 Reduced Safety Structural Performance Range	400
		C2.3.1.5 Collapse Prevention Structural Performance Level	406
		C2.3.1.6 Structural Performance Not Considered (S-6)	406
	C2.3.2	Nonstructural Performance Levels	406
		C2.3.2.1 Operational Nonstructural Performance Level (N-A)	406
		C2.3.2.2 Position Retention Nonstructural Performance Level (N-B)	409
		C2.3.2.3 Life Safety Nonstructural Performance Level (N-C)	409
		C2.3.2.4 Hazards Reduced Nonstructural Performance Level (N-D)	409
		C2.3.2.5 Nonstructural Performance Not Considered (N-E)	410
	C2.3.3	Designation of Target Building Performance Levels	410
		C2.3.3.1 Operational Building Performance Level (1-A)	410
		C2.3.3.2 Immediate Occupancy Building Performance Level (1-B)	410
		C2.3.3.3 Life Safety Building Performance Level (3-C)	410
		C2.3.3.4 Collapse Prevention Building Performance Level (5-D)	411
	C2.4.1	General Procedure for Hazard Caused by Ground Shaking	411
		C2.4.1.1 BSE-2N Spectral Response Acceleration Parameters	411
		C2.4.1.2 BSE-1N Spectral Response Acceleration Parameters	412
		C2.4.1.3 BSE-2E Spectral Response Acceleration Parameters	412
		C2.4.1.4 BSE-1E Spectral Response Acceleration Parameters	412
		C2.4.1.5 Response Acceleration Parameters for Other Probabilities of Exceedance	412
		C2.4.2.1 Site-Specific Response Spectra	412
	C2.4.3	Ground Motion Acceleration Histories	412
C2.5		Level of Seismicity.	413
C3		EVALUATION AND RETROFIT REQUIREMENTS	415
	C3.2	As-Built Information	415
		C3.2.1 Building Type	415
		C3.2.2 Building Configuration.	415
		C3.2.3 Component Properties	415
		C3.2.4 Site and Foundation Information	416
		C3.2.5 Adjacent Buildings.	416
		C3.2.5.1 Building Pounding	416
		C3.2.5.2 Shared Element Condition	416
		C3.2.5.3 Hazards from Adjacent Buildings	416
	C3.3	Benchmark Buildings	416
		C3.3.1 Existing Documents	417
		C3.3.2 Field Verification.	417
		C3.3.3 Condition Assessment	417
		C3.3.4 Geologic Site Hazards	417
	C3.4	Evaluation and Retrofit Procedures	417
		C3.4.1 Limitations on the Use of Tier 1 and Tier 2 Evaluation and Retrofit Procedures	417
		C3.4.1.2 Buildings Composed of More than One of the Common Building Types	418
		C3.4.2 Tier 1 Screening Procedure	418
		C3.4.3 Tier 2 Deficiency-Based Evaluation and Retrofit Procedures.	418
		C3.4.3.1 Evaluation Requirements.	418
		C3.4.3.2 Retrofit Requirements	419
		C3.4.4 Tier 3 Systematic Evaluation and Retrofit Procedures	419
		C3.4.4.1 Evaluation Requirements.	419
		C3.4.4.2 Retrofit Requirements	419
C4		TIER 1 SCREENING	421
	C4.1	Scope	421
		C4.1.1 Performance Level	421
	C4.2	Scope of Investigation Required.	421
		C4.2.2 Building Type	421
		C4.2.3 Default Material Values	421

C4.3	Selection and Use of Checklists	421
C4.4	Tier 1 Analysis.	422
	C4.4.2.1 Pseudoseismic Force	422
	C4.4.2.4 Period.	422
	C4.4.3.1 Story Drift for Moment Frames	422
	C4.4.3.2 Shear Stress in Concrete Frame Columns	422
	C4.4.3.5 Precast Connections	422
	C4.4.3.6 Column Axial Stress Caused by Overturning	422
	C4.4.3.8 Prestressed Elements	422
	C4.4.3.9 Flexural Stress in Columns and Beams of Steel Moment Frames	422
C5	TIER 2 DEFICIENCY-BASED EVALUATION AND RETROFIT	423
C5.1	Scope	423
C5.2	General Requirements	423
	C5.2.1 Performance Level and Seismic Hazard Level	423
	C5.2.2 As-Built Information	423
	C5.2.3 Condition Assessment	423
	C5.2.4 Tier 2 Analysis Methods.	423
	C5.2.5 Tier 2 Acceptance Criteria.	424
	C5.2.6 Knowledge Factor	424
C5.3	Tier 2 Deficiency-Based Evaluation Requirements	424
C5.4	Procedures for Basic Configuration of Building Systems.	424
	C5.4.1 General	424
	C5.4.1.1 Load Path.	424
	C5.4.1.2 Adjacent Buildings.	424
	C5.4.1.3 Mezzanines.	424
	C5.4.2 Building Configuration.	424
	C5.4.2.1 Weak Story Irregularity	424
	C5.4.2.2 Soft Story Irregularity	424
	C5.4.2.3 Vertical Irregularities.	425
	C5.4.2.4 Geometric Irregularity	425
	C5.4.2.5 Mass Irregularity	425
	C5.4.2.6 Torsion Irregularity.	425
	C5.4.3 Geologic Site Hazards and Foundation Components	425
	C5.4.3.1 Geologic Site Hazards	425
	C5.4.3.3 Overturning.	425
C5.5	Procedures for Seismic-Force-Resisting Systems	425
	C5.5.1 General	425
	C5.5.1.1 Redundancy	425
	C5.5.2 Procedures for Moment Frames	425
	C5.5.2.1 General Procedures for Moment Frames	425
	C5.5.2.2 Procedures for Steel Moment Frames	425
	C5.5.2.3 Procedures for Concrete Moment Frames	425
	C5.5.3 Procedures for Shear Walls	426
	C5.5.3.1 General Procedures for Shear Walls.	426
	C5.5.3.3 Procedures for Precast Concrete Shear Walls	426
	C5.5.4 Procedures for Braced Frames.	426
	C5.5.4.1 Axial Stress Check.	426
C5.7	Procedures for Connections	426
	C5.7.4 Interconnection of Elements	426
	C5.7.4.4 Beam, Girder, and Truss Supported on Unreinforced Masonry (URM) Walls or URM Pilasters	426
C5.8	Tier 2 Deficiency-Based Retrofit Requirements	426
C6	TIER 3 SYSTEMATIC EVALUATION AND RETROFIT	427
C6.2	Data Collection Requirements	427
	C6.2.3 Comprehensive Data Collection Requirements	427
	C6.2.4 Knowledge Factor	427
	C6.2.4.1 General	427
	C6.2.4.3 Nonlinear Procedures	427
	C6.2.4.4 Assumed Values of the Knowledge Factor	427
C6.3	Tier 3 Evaluation Requirements	427
C6.4	Tier 3 Retrofit Requirements.	428

C7	ANALYSIS PROCEDURES AND ACCEPTANCE CRITERIA	429
C7.1	Scope	429
C7.2	General Analysis Requirements	429
C7.2.2	Component Gravity Loads and Load Combinations	429
C7.2.3	Mathematical Modeling	429
C7.2.3.1	Basic Assumptions	429
C7.2.3.2	Torsion	429
C7.2.3.3	Primary and Secondary Components	430
C7.2.3.5	Foundation Modeling	430
C7.2.3.6	Damping	430
C7.2.4	Configuration	430
C7.2.5	Multidirectional Seismic Effects	430
C7.2.5.1	Concurrent Seismic Effects	430
C7.2.6	P- Δ Effects	431
C7.2.7	Soil-Structure Interaction	431
C7.2.8	Overturning	431
C7.2.8.1	Overturning Effects for Linear Procedures	432
C7.2.9	Diaphragms, Chords, Collectors, and Ties	432
C.7.2.10	Continuity	432
C7.2.11	Structural Walls and Their Anchorage	432
C7.2.11.2	Out-of-Plane Strength of Walls	432
C7.2.13	Building Separation	433
C7.2.13.2	Separation Exceptions	433
C7.2.14	Verification of Analysis Assumptions	433
C7.3	Analysis Procedure Selection	433
C7.3.1	Linear Procedures	433
C7.3.1.1	Method to Determine Limitations on Use of Linear Procedures	433
C7.3.1.2	Limitations on Use of the Linear Static Procedure	433
C7.3.2	Nonlinear Procedures	433
C7.3.2.1	Nonlinear Static Procedure (NSP)	433
C7.3.2.2	Nonlinear Dynamic Procedure (NDP)	433
C7.4	Analysis Procedures	434
C7.4.1	Linear Static Procedure (LSP)	434
C7.4.1.1	Basis of the Procedure	434
C7.4.1.2	Period Determination for LSP	434
C7.4.1.3	Determination of Forces and Deformations for LSP	435
C7.4.2	Linear Dynamic Procedure (LDP)	435
C7.4.2.1	Basis of the Procedure	435
C7.4.3	Nonlinear Static Procedure (NSP)	435
C7.4.3.1	Basis of the Procedure	435
C7.4.3.2	Modeling and Analysis Considerations for NSP	435
C7.4.3.3	Determination of Forces, Displacements, and Deformations for NSP	436
C7.4.4	Nonlinear Dynamic Procedure (NDP)	436
C7.4.4.1	Basis of the Procedure	436
C7.4.4.3	Determination of Forces and Deformations for NDP	437
C7.4.4.4	Damping for NDP	437
C7.5	Acceptance Criteria	437
C7.5.1	General Requirements	437
C7.5.1.1	Primary and Secondary Components	437
C7.5.1.2	Deformation-Controlled and Force-Controlled Actions	438
C7.5.1.3	Expected and Lower-Bound Strengths	439
C7.5.1.4	Material Properties	439
C7.5.2	Linear Procedures	439
C7.5.2.1	Forces and Deformations	439
C7.5.3	Nonlinear Procedures	440
C7.5.3.2	Acceptance Criteria for Nonlinear Procedures	440
C7.6	Alternative Modeling Parameters and Acceptance Criteria	441
C7.6.1	Experimental Setup	441
C7.6.2	Data Reduction and Reporting	443
C7.6.3	Analysis Parameters and Acceptance Criteria for Subassemblies Based on Experimental Data	443

C8	FOUNDATIONS AND GEOLOGIC SITE HAZARDS	445
C8.1	Scope	445
C8.2	Site Characterization	445
C8.2.1	Foundation Information	445
C8.2.1.1	Foundation Conditions	445
C8.2.1.3	Load–Deformation Characteristics under Seismic Loading	445
C8.2.2	Seismic–Geologic Site Hazards	445
C8.2.2.1	Fault Rupture	445
C8.2.2.2	Liquefaction	445
C8.2.2.3	Settlement of Nonliquefiable Soils	447
C8.2.2.4	Landsliding	448
C8.3	Mitigation of Seismic–Geologic Site Hazards	448
C8.4	Foundation Strength and Stiffness	449
C8.4.1	Expected Foundation Capacities	449
C8.4.1.1	Prescriptive Expected Capacities	449
C8.4.1.2	Site-Specific Capacities	449
C8.4.2	Load–Deformation Characteristics for Shallow Foundations	449
C8.4.2.1	Flexibility of Shallow Bearing Foundations	450
C8.4.2.2	Soil Shear Modulus and Poisson’s Ratio Parameters	450
C8.4.2.3	Shallow Footings Considered Rigid (Method 1)	450
C8.4.2.4	Shallow Footings Considered Rigid (Method 2)	452
C8.4.2.6	Shallow Foundation Lateral Load	452
C8.4.3	Pile Foundations	452
C8.4.3.1	Stiffness Parameters	452
C8.4.3.2	Capacity Parameters	453
C8.4.4	Drilled Shafts	453
C8.5	Soil–Structure Interaction Effects	453
C8.5.1	Kinematic Interaction	453
C8.5.1.1	Base Slab Averaging	453
C8.5.1.2	Embedment	453
C8.5.2	Foundation Damping Soil–Structure Interaction Effects	453
C8.5.2.1	Radiation Damping for Rectangular Foundations	454
C8.6	Seismic Earth Pressure	454
C8.7	Foundation Retrofit	454
C9	STEEL AND IRON	457
C9.1	Scope	457
C9.2	Material Properties and Condition Assessment	457
C9.2.1	General	457
C9.2.2.1	Material Properties	458
C9.2.2.2	Component Properties	458
C9.2.2.4	Minimum Number of Tests	459
C9.2.3	Condition Assessment	459
C9.2.3.1	General	459
C9.2.3.2	Scope and Procedures	460
C9.2.3.3	Basis for the Mathematical Building Model	460
C9.3	General Assumptions and Requirements	460
C9.3.1.2	Use of Nonlinear Procedures for Cold-Formed Steel Light-Frame Construction	460
C9.3.2.2	Deformation-Controlled Actions	460
C9.3.3	Connection Requirements in Cold-Formed Steel Light-Frame Construction	461
C9.3.5.2	Retrofit Measures for Cold-Formed Steel Light-Frame Construction	461
C9.4	Steel Moment Frames	461
C9.4.1	General	461
C9.4.2.1	General	461
C9.4.2.3	Strength of FR Moment Frames	463
C9.4.2.4	Acceptance Criteria for FR Moment Frames	463
C9.4.2.5	Retrofit Measures for FR Moment Frames	464
C9.4.3	Partially Restrained (PR) Moment Frames	465
C9.4.3.1	General	465
C9.4.3.2	Stiffness of PR Moment Frames	465
C9.4.3.3	Strength of PR Moment Frames	465
C9.4.3.4	Acceptance Criteria for PR Moment Frames	465

	C9.4.3.5	Retrofit Measures for PR Moment Frames	465
C9.5		Steel Braced Frames	465
	C9.5.1	General	465
	C9.5.2	Concentrically Braced Frames	466
	C9.5.2.1	General	466
	C9.5.2.2	Stiffness of Concentrically Braced Frames	466
	C9.5.2.3	Strength of Concentrically Braced Frames	466
	C9.5.2.4	Acceptance Criteria for Concentrically Braced Frames	467
	C9.5.2.5	Retrofit Measures for Concentrically Braced Frames	467
	C9.5.3	Eccentrically Braced Frames.	467
	C9.5.3.2	Stiffness of Eccentrically Braced Frames	467
	C9.5.3.3	Strength of Eccentrically Braced Frames	467
	C9.5.3.4	Acceptance Criteria for Eccentrically Braced Frames.	467
	C9.5.3.5	Retrofit Measures.	467
	C9.5.4	Buckling-Restrained Braced Frames.	467
	C9.5.4.1	General	467
	C9.5.4.3	Strength of Buckling-Restrained Braced Frames	467
	C9.5.4.5	Retrofit Measures for Buckling-Restrained Braced Frames.	467
	C9.5.5	Steel Plate Shear Walls	467
	C9.5.5.1	General	467
	C9.5.5.2	Stiffness of Steel Plate Shear Walls	467
	C9.5.5.5	Retrofit Measures for Steel Plate Shear Walls	467
C9.6		Steel Frames with Infills	468
C9.7		Cold-Formed Steel Light Frame Construction, Shear Wall Systems	468
	C9.7.1	General	468
	C9.7.2	Types of Cold-Formed Steel Light-Frame Construction, Shear Wall Systems.	468
	C9.7.2.1	Existing Cold-Formed Steel Light-Frame Shear Walls	468
	C9.7.2.2	Enhanced Cold-Formed Steel Light-Frame Shear Walls	468
	C9.7.3	Stiffness, Strength, Acceptance Criteria, and Connection Design for Cold-Formed Steel Light-Frame Construction Shear Wall Systems	468
C9.8		Cold-Formed Steel Moment-Frame Systems	469
	C9.8.3.1	Generic Cold-Formed Steel Moment Connection	469
	C9.8.3.2	Cold-Formed Steel Special Bolted Moment Frame	469
C9.9		Cold-Formed Steel Light-Frame Construction, Strap-Braced Wall Systems	469
	C9.9.1	General	469
	C9.9.2	Types of Cold-Formed Steel Light-Framed Construction with Strap-Braced Walls	469
	C9.9.2.1	Existing Cold-Formed Steel Light-Frame Construction with Strap-Braced Walls	469
	C9.9.2.2	Cold-Formed Steel Light-Frame Construction with Enhanced Strap-Braced Walls	469
C9.10		Diaphragms.	469
	C9.10.1.1	General	469
	C9.10.1.2	Stiffness of Bare Metal Deck Diaphragms	469
	C9.10.1.3	Strength of Bare Metal Deck Diaphragms	469
	C9.10.1.4	Acceptance Criteria for Bare Metal Deck Diaphragms	469
	C9.10.1.5	Retrofit Measures for Bare Metal Deck Diaphragms	470
	C9.10.2	Metal Deck Diaphragms with Structural Concrete Topping	470
	C9.10.2.1	General	470
	C9.10.2.2	Stiffness of Metal Deck Diaphragms with Structural Concrete Topping.	470
	C9.10.2.3	Strength of Metal Deck Diaphragms with Structural Concrete Topping	470
	C9.10.2.4	Acceptance Criteria for Metal Deck Diaphragms with Structural Concrete Topping	470
	C9.10.2.5	Retrofit Measures for Metal Deck Diaphragms with Structural Concrete Topping	470
	C9.10.3	Metal Deck Diaphragms with Nonstructural Topping	470
	C9.10.3.1	General	470
	C9.10.3.4	Acceptance Criteria for Metal Deck Diaphragms with Nonstructural Topping	470
	C9.10.3.5	Retrofit Measures for Metal Deck Diaphragms with Nonstructural Topping.	470
	C9.10.4	Horizontal Steel Bracing (Steel Truss Diaphragms)	470
	C9.10.4.1	General	470
	C9.10.4.5	Retrofit Measures for Steel Truss Diaphragms	471
	C9.10.5	Archaic Diaphragms	471
	C9.10.5.1	General	471
	C9.10.5.2	Stiffness of Archaic Diaphragms	471
	C9.10.5.5	Retrofit Measures for Archaic Diaphragms	471

	C9.10.6	Chord and Collector Elements	471
	C9.10.6.1	General	471
	C9.10.6.5	Retrofit Measures for Chord and Collector Elements	471
C9.11		Steel Pile Foundations	471
	C9.11.1	General	471
	C9.11.4	Acceptance Criteria for Steel Pile Foundations	471
	C9.11.5	Retrofit Measures for Steel Pile Foundations	471
C9.12		Cast and Wrought Iron	471
	C9.12.1	General	471
C10		CONCRETE	473
	C10.1	Scope	473
	C10.2	Material Properties and Condition Assessment	473
	C10.2.1	General	473
	C10.2.2.1	Material Properties	473
	C10.2.2.2	Component Properties	474
	C10.2.2.3	Test Methods to Quantify Material Properties	474
	C10.2.2.4	Minimum Number of Tests	474
	C10.2.3	Condition Assessment	475
	C10.2.3.1	General	475
C10.3		General Assumptions and Requirements	476
	C10.3.1.1	General	476
	C10.3.1.2	Stiffness	476
	C10.3.2	Strength and Deformability	476
	C10.3.2.1	General	476
	C10.3.2.2	Deformation-Controlled Actions	477
	C10.3.3	Flexure and Axial Loads	477
	C10.3.3.1	Usable Strain Limits	477
	C10.3.4	Shear and Torsion	477
	C10.3.5	Development and Splices of Reinforcement	477
	C10.3.6	Connections to Existing Concrete	478
	C10.3.6.1	Cast-in-Place Anchors and Connection Systems	478
C10.4		Concrete Moment Frames	478
	C10.4.2.1	General	478
	C10.4.2.2	Stiffness of Reinforced Concrete Beam–Column Moment Frames	479
	C10.4.2.3	Strength of Reinforced Concrete Beam–Column Moment Frames	480
	C10.4.2.4	Acceptance Criteria for Reinforced Concrete Beam–Column Moment Frames	481
	C10.4.2.5	Retrofit Measures for Reinforced Concrete Beam–Column Moment Frames	481
	C10.4.3	Post-tensioned Concrete Beam–Column Moment Frames	481
	C10.4.3.5	Retrofit Measures for Post-tensioned Concrete Beam–Column Moment Frames	481
	C10.4.4	Acceptance Criteria for Slab–Column Moment Frames	482
	C10.4.4.1	General	482
	C10.4.4.3	Strength of Slab–Column Moment Frames	482
	C10.4.4.5	Retrofit Measures for Slab–Column Moment Frames	483
C10.5		Precast Concrete Frames	483
	C10.5.1.1	Precast Concrete Frames Expected to Resist Seismic Forces	483
	C10.5.2.5	Retrofit Measures for Precast Concrete Frames Expected to Resist Seismic Forces	483
	C10.5.3.2	Stiffness of Precast Concrete Frames Not Expected to Resist Seismic Forces Directly	483
	C10.5.3.5	Retrofit Measures for Precast Concrete Frames Not Expected to Resist Seismic Forces Directly	483
C10.6		Concrete Frames with Infills	483
	C10.6.1.3	Concrete Infills	483
	C10.6.2.1	General	483
	C10.6.2.5	Retrofit Measures for Concrete Frames with Masonry Infills	483
	C10.6.3	Concrete Frames with Concrete Infills	483
	C10.6.3.5	Retrofit Measures for Concrete Frames with Concrete Infills	483
C10.7		Concrete Structural Walls	484
	C10.7.1	Types of Concrete Structural Walls and Associated Components	484
	C10.7.1.1	Monolithic Reinforced Concrete Structural Walls and Wall Segments	484

	C10.7.1.2	Reinforced Concrete Columns Supporting Discontinuous Structural Walls	484
	C10.7.1.3	Reinforced Concrete Coupling Beams.	484
C10.7.2		Reinforced Concrete Structural Walls, Wall Segments, and Coupling Beams	485
	C10.7.2.1	General	485
	C10.7.2.2	Stiffness of Reinforced Concrete Structural Walls, Wall Segments, and Coupling Beams.	486
	C10.7.2.3	Strength of Reinforced Concrete Structural Walls, Wall Segments, and Coupling Beams.	487
	C10.7.2.4	Acceptance Criteria for Reinforced Concrete Structural Walls, Wall Segments, and Coupling Beams.	487
	C10.7.2.5	Retrofit Measures for Reinforced Concrete Structural Walls, Wall Segments, and Coupling Beams.	487
C10.8		Precast Concrete Structural Walls	487
	C10.8.1.1	Effectively Monolithic Construction.	487
	C10.8.1.2	Jointed Construction	488
	C10.8.1.3	Tilt-Up Construction	488
C10.8.2		Precast Concrete Structural Walls and Wall Segments	488
	C10.8.2.3	Strength of Precast Concrete Structural Walls and Wall Segments.	488
	C10.8.2.4	Acceptance Criteria for Precast Concrete Structural Walls and Wall Segments	488
	C10.8.2.5	Retrofit Measures for Precast Concrete Structural Walls and Wall Segments	488
C10.9		Concrete-Braced Frames	488
C10.9.6		Retrofit Measures for Concrete-Braced Frames	488
C10.10		Cast-in-Place Concrete Diaphragms	488
	C10.10.1.3	Diaphragm Chords	488
C10.10.2		Analysis, Modeling, and Acceptance Criteria for Cast-in-Place Concrete Diaphragms	488
	C10.10.2.1	General	488
	C10.10.2.2	Stiffness of Cast-in-Place Concrete Diaphragms	488
C10.10.3		Retrofit Measures for Cast-in-Place Concrete Diaphragms	488
C10.11		Precast Concrete Diaphragms	489
C10.11.1		Components of Precast Concrete Diaphragms	489
C10.11.2		Analysis, Modeling, and Acceptance Criteria for Precast Concrete Diaphragms	489
C10.11.3		Retrofit Measures for Precast Concrete Diaphragms.	489
C10.12		Concrete Foundations	489
	C10.12.1.2	Deep Concrete Foundations	489
C10.12.2		Analysis of Existing Concrete Foundations.	489
C10.12.4		Retrofit Measures for Concrete Foundations	489
	C10.12.4.1	Retrofit Measures for Shallow Concrete Foundations.	489
	C10.12.4.2	Retrofit Measures for Deep Foundations	490
C11		MASONRY.	491
C11.1		Scope.	491
C11.2		Condition Assessment and Material Properties	491
	C11.2.1	General	491
	C11.2.2	Condition Assessment	491
	C11.2.2.2	Comprehensive Condition Assessment	492
	C11.2.2.3	Supplemental Tests.	493
	C11.2.2.4	Condition Enhancement	493
	C11.2.2.5	Pointing or Repointing of Unreinforced Masonry Walls	493
	C11.2.3	Properties of In-Place Materials and Components	493
	C11.2.3.3	Masonry Compressive Strength	493
	C11.2.3.4	Masonry Elastic Modulus in Compression	494
	C11.2.3.5	Masonry Flexural Tensile Strength	494
	C11.2.3.7	Masonry Shear Modulus.	494
	C11.2.3.9	Minimum Number of Tests	494
	C11.2.3.10	Default Properties	494
C11.3		Masonry Walls	495
	C11.3.1	Types of Masonry Walls.	495
	C11.3.1.2	New Masonry Walls	495
	C11.3.1.3	Retrofitted Masonry Walls.	495
	C11.3.2.1	Stiffness of URM Walls and Wall Piers Subject to In-Plane Actions	496
	C11.3.2.2	Strength of URM Walls Subject to In-Plane Actions.	498
	C11.3.2.3	Acceptance Criteria for URM In-Plane Actions.	502
	C11.3.3.2	Strength of URM Walls Subject to Out-of-Plane Actions	504
	C11.3.3.3	Acceptance Criteria for URM Walls Subject to Out-of-Plane Actions.	504

	C11.3.5.3	Acceptance Criteria for Reinforced Masonry Wall Out-of-Plane Actions	505
C11.4	Masonry Infills		505
	C11.4.1.1	Existing Masonry Infills	505
	C11.4.1.3	Retrofitted Masonry Infills	505
C11.4.2	Masonry Infill In-Plane Actions		505
	C11.4.2.1	Stiffness—Masonry Infill In-Plane Actions	506
	C11.4.2.2	Stiffness—Masonry Infill with Openings In-Plane Actions	506
	C11.4.2.3	Strength—Infilled Reinforced Concrete Frames In-Plane Actions	506
	C11.4.2.4	Strength—Infilled Steel Frames In-Plane Actions	507
	C11.4.2.5	Drift—Infill Wall In-Plane Actions	507
	C11.4.2.6	Strut Model for Infill In-Plane Actions	507
	C11.4.2.7	Acceptance Criteria for Infill Wall In-Plane Actions	508
	C11.4.3.1	Stiffness—Infill Wall Out-of-Plane Actions	508
	C11.4.3.2	Strength—Infill Wall Out-of-Plane Actions	508
	C11.4.3.3	Strength—Infill Wall In-Plane and Out-of-Plane Interaction	508
	C11.5.2	Analysis of Anchors	508
	C11.5.3	Quality Assurance for Anchors in Masonry Walls	508
C11.6	Masonry Foundation Elements		508
	C11.6.1	Types of Masonry Foundations	508
	C11.6.3	Foundation Retrofit Measures	509
C12	WOOD LIGHT FRAME		511
C12.1	Scope		511
C12.2	Material Properties and Condition Assessment		511
	C12.2.1	General	511
	C12.2.2.2	Component Properties	512
	C12.2.2.3	Test Methods to Quantify Material Properties	512
	C12.2.2.4	Minimum Number of Tests	512
	C12.2.2.5	Default Properties	513
	C12.2.3	Condition Assessment	513
	C12.2.3.1	General	513
	C12.2.3.2	Scope and Procedures for Condition Assessment	513
	C12.2.3.3	Basis for the Mathematical Building Model	514
C12.3	General Assumptions and Requirements		514
	C12.3.2.2	Deformation-Controlled Actions	514
	C12.3.2.3	Force-Controlled Actions	514
	C12.3.3	Connection Requirements	514
	C12.3.5	Retrofit Measures	514
C12.4	Wood Light-Frame Shear Walls		514
	C12.4.1	General	514
	C12.4.2.2	Enhanced Wood Frame Shear Walls	515
	C12.4.2.3	New Wood Frame Shear Walls	515
C12.5	Wood Diaphragms		518
	C12.5.1	General	518
	C12.5.2.2	Enhanced Wood Diaphragms	518
	C12.5.3.5	Double Diagonal Sheathing Diaphragms	520
	C12.5.3.6	Wood Structural Panel Sheathing Diaphragm	520
	C12.5.3.7	Wood Structural Panel Overlays on Straight or Diagonal Sheathing Diaphragms	520
	C12.5.3.8	Wood Structural Panel Overlays on Existing Wood Structural Panel Sheathing Diaphragms	521
C12.6	Wood Foundations		521
	C12.6.1	Types of Wood Foundations	521
	C12.6.2	Analysis, Strength, and Acceptance Criteria for Wood Foundations	521
	C12.6.3	Retrofit Measures for Wood Foundations	521
C12.7	Other Wood Elements and Components		521
	C12.7.1	General	521
	C12.7.1.2	Strength of Other Wood Elements and Components	521
	C12.7.1.3	Acceptance Criteria for Other Wood Elements and Components	521
C13	ARCHITECTURAL, MECHANICAL, AND ELECTRICAL COMPONENTS		523
C13.1	Scope		523
C13.2	Evaluation and Retrofit Procedure for Nonstructural Components		523

	C13.2.1	Data Collection and Condition Assessment	523
	C13.2.2	Classification of Acceleration-Sensitive and Deformation-Sensitive Components	523
C13.3		Component Evaluation	524
C13.4		Evaluation and Retrofit Procedures	524
	C13.4.1	Analytical Procedure	524
	C13.4.2	Prescriptive Procedure	524
		C13.4.3.1 Horizontal Seismic Forces	524
		C13.4.3.3 Load Combination	524
	C13.4.4	Deformation Analysis	525
	C13.4.6	Testing Requirements for Evaluating the Performance of Existing Attachments for Nonstructural Components.	525
		C13.4.6.3 Tension Testing Procedure.	525
		C13.4.6.5 Alternate Test Criteria	525
C13.5		Retrofit Approaches	525
C13.6		Architectural Components: Definition, Behavior, and Acceptance Criteria.	526
		C13.6.1.2 Anchored Veneer.	526
		C13.6.2.1 Definition and Scope.	527
		C13.6.2.2 Component Behavior and Retrofit Methods.	527
		C13.6.2.4 Evaluation Requirements.	528
	C13.6.3	Interior Veneers	528
		C13.6.3.2 Component Behavior and Retrofit Methods.	528
	C13.6.4	Ceilings.	528
		C13.6.4.1 Definition and Scope.	528
		C13.6.4.2 Component Behavior and Retrofit Methods.	528
	C13.6.5	Parapets and Cornices	528
		C13.6.5.1 Definition and Scope.	528
		C13.6.5.2 Component Behavior and Retrofit Methods.	528
	C13.6.6	Architectural Appendages and Marquees	528
		C13.6.6.1 Definition and Scope.	528
		C13.6.6.2 Component Behavior and Retrofit Methods.	528
	C13.6.7	Chimneys and Stacks	528
		C13.6.7.2 Component Behavior and Retrofit Methods.	528
	C13.6.8	Stairs and Ramps.	528
		C13.6.8.1 Definition and Scope.	528
		C13.6.8.2 Component Behavior and Retrofit Methods.	528
	C13.6.9	Doors Required for Emergency Services Egress in Essential Facilities	529
		C13.6.9.1 Definition and Scope.	529
	C13.6.10	Computer Access Floors.	529
		C13.6.10.1 Definition and Scope.	529
		C13.6.10.2 Component Behavior and Retrofit Methods.	529
		C13.6.10.4 Evaluation Requirements.	529
C13.7		Mechanical, Electrical, and Plumbing Components: Definition, Behavior, and Acceptance Criteria	529
	C13.7.1	Mechanical Equipment.	529
		C13.7.1.1 Definition and Scope.	529
		C13.7.1.2 Component Behavior and Retrofit Methods.	529
		C13.7.1.4 Evaluation Requirements.	529
	C13.7.2	Storage Vessels and Water Heaters	529
		C13.7.2.1 Definition and Scope.	529
		C13.7.2.2 Component Behavior and Retrofit Methods.	529
		C13.7.2.4 Evaluation Requirements.	529
	C13.7.3	Pressure Piping.	530
		C13.7.3.2 Component Behavior and Retrofit Methods.	530
		C13.7.3.4 Evaluation Requirements.	530
		C13.7.4.2 Component Behavior and Retrofit Methods.	530
	C13.7.4	Fire Suppression Piping	530
		C13.7.4.3 Acceptance Criteria	530
		C13.7.4.4 Evaluation Requirements.	530
	C13.7.5	Fluid Piping Other Than Fire Suppression	530
		C13.7.5.1 Definition and Scope.	530
		C13.7.5.2 Component Behavior and Retrofit Methods.	530
		C13.7.5.4 Evaluation Requirements.	530
	C13.7.6	Ductwork.	530
		C13.7.6.2 Component Behavior and Retrofit Methods.	530
	C13.7.7	Electrical and Communications Equipment	530
		C13.7.7.2 Component Behavior and Retrofit Methods.	530

	C13.7.7.4	Evaluation Requirements.	530
C13.7.8		Electrical and Communications Distribution Components	530
	C13.7.8.2	Component Behavior and Retrofit Methods.	530
C13.7.9		Light Fixtures	531
	C13.7.9.2	Component Behavior and Retrofit Methods.	531
C13.7.10		Rooftop Solar Photovoltaic Arrays	531
	C13.7.10.1	Definition and Scope.	531
	C13.7.10.2	Component Behavior and Retrofit Methods.	531
	C13.7.10.4	Evaluation Requirements.	531
C13.7.11		Elevators	531
	C13.7.11.2	Component Behavior and Retrofit Methods.	531
	C13.7.11.4	Evaluation Requirements.	531
C13.7.12		Conveyors	531
	C13.7.12.2	Component Behavior and Retrofit Methods.	531
C13.8		Furnishings and Interior Equipment: Definition, Behavior, and Acceptance Criteria	531
	C13.8.1	Storage Racks	531
	C13.8.1.1	Definition and Scope.	531
	C13.8.1.2	Component Behavior and Retrofit Methods.	531
C13.8.2		Contents	531
	C13.8.2.2	Component Behavior and Retrofit Methods.	531
C13.8.3		Hazardous Material Storage	531
	C13.8.3.2	Component Behavior and Retrofit Methods.	531
C13.8.4		Computer and Communication Racks.	531
	C13.8.4.1	Definition and Scope.	531
	C13.8.4.2	Component Behavior and Retrofit Methods.	532
C14		SEISMIC ISOLATION.	533
	C14.1	Scope.	533
	C14.2	General Requirements	533
	C14.2.2.1	Ground Motion Acceleration Histories	533
	C14.2.3.1	Wind Displacement	533
	C14.2.3.2	Lateral Restoring Force	533
	C14.2.3.3	Displacement Restraint.	533
	C14.2.3.4	Vertical Load Stability.	533
	C14.2.3.5	Overturning.	533
	C14.2.3.6	Inspection and Replacement.	533
C14.3		Seismic Isolation System Component Properties	534
	C14.3.1	General Requirements	534
	C14.3.2	Isolation System Component Types	534
	C14.3.3	Nominal Design Properties	534
	C14.3.4.1	Specification Tolerance on Nominal Design Properties.	534
	C14.3.4.2	Testing Variations on Nominal Design Properties	534
	C14.3.4.3	Aging and Environmental Effects on Nominal Design Properties	535
	C14.3.5	Property Modification (λ) Factors	535
C14.4		Isolation System Modeling.	535
	C14.4.1	Isolation Component Modeling	535
	C14.4.1.1	Upper-Bound and Lower-Bound Lateral Force–Deflection Behavior of Isolation System Components	535
	C14.4.2	Isolation System and Superstructure Modeling	536
	C14.4.2.1	General	536
C14.5		Analysis Procedures	536
	C14.5.1.1	Linear Static Procedure	536
	C14.5.2.1	General	536
	C14.5.2.5	Vertical Distribution of Force	538
	C14.5.5	Nonlinear Dynamic Procedure.	538
	C14.5.5.3	Accidental Mass Eccentricity	538
C14.6		Nonstructural Components.	539
	C14.6.3	Components Crossing the Isolation Interface	539
C14.7		Isolation System Testing and Design Properties	540
	C14.7.3.5	Dynamic Testing	540
	C14.7.3.9	Testing Similar Units	540
	C14.7.4	Production Testing	540
	C14.7.6	System Adequacy	541
C14.8		Design Review	541

C15	DESIGN REQUIREMENTS FOR STRUCTURES WITH SUPPLEMENTAL ENERGY DISSIPATION	543
C15.1	Scope	543
C15.2.2.1	Device Classification	543
C15.2.2.4	Performance Objectives and System Redundancy	543
C15.3.1	Nominal Design Properties	544
C15.3.2	Maximum and Minimum Damper Properties	544
C15.4.1	General Limitations for the Linear Analysis Procedures	544
C15.5.1	General Requirements	545
C15.5.2.3	Other Types of Devices	545
C15.5.4	Accidental Eccentricity	545
C15.7	Design Review	545
C15.8.2	Production Tests	545
C15.10.2	Velocity-Dependent Devices	546
C16	SYSTEM-SPECIFIC PERFORMANCE PROCEDURES	547
C16.1	Scope	547
C16.2	Special Procedure for Unreinforced Masonry	547
C16.2.1	Scope	547
C16.2.2	Condition of Existing Materials	548
C16.2.2.2	Testing	548
C17	TIER 1 CHECKLISTS	551
C17.1.1	Very Low Seismicity Checklist	551
C17.1.2	Basic Configuration Checklist	551
C17.2	Structural Checklists for Building Types W1: Wood Light Frames and W1A: Multi-Story, Multi-Unit Residential Wood Frame	551
C17.3	Structural Checklists for Building Type W2: Wood Frames, Commercial and Industrial	551
C17.4	Structural Checklists for Building Type S1: Steel Moment Frames with Stiff Diaphragms and S1A: Steel Moment Frames with Flexible Diaphragms	551
C17.5	Structural Checklists for Building Types S2: Steel Braced Frames with Stiff Diaphragms and S2A: Steel Braced Frames with Flexible Diaphragms	551
C17.6	Structural Checklists for Building Type S3: Metal Building Frames	552
C17.7	Structural Checklists for Building Type S4: Dual Systems with Backup Steel Moment Frames and Stiff Diaphragms	552
C17.8	Structural Checklists for Building Types S5: Steel Frames with Infill Masonry Shear Walls and Stiff Diaphragms and S5A: Steel Frames with Infill Masonry Shear Walls and Flexible Diaphragms	552
C17.9	Structural Checklists for Building Type CFS1: Cold-Formed Steel Light-Frame Bearing Wall Construction, Shear Wall Lateral System	552
C17.10	Structural Checklists for Building Type CFS2: Cold-Formed Steel Light-Frame Bearing Wall Construction, Strap-Braced Lateral Wall System	552
C17.11	Structural Checklists for Building Type C1: Concrete Moment Frames	552
C17.12	Structural Checklists for Building Types C2: Concrete Shear Walls with Stiff Diaphragms and C2A: Concrete Shear Walls with Flexible Diaphragms	553
C17.13	Structural Checklists for Building Types C3: Concrete Frames with Infill Masonry Shear Walls and C3A: Concrete Frames with Infill Masonry Shear Walls and Flexible Diaphragms	553
C17.14	Structural Checklists for Building Types PC1: Precast or Tilt-Up Concrete Shear Walls with Flexible Diaphragms and PC1A: Precast or Tilt-Up Concrete Shear Walls with Stiff Diaphragms	553
C17.15	Structural Checklists for Building Type PC2: Precast Concrete Frames with Shear Walls	553
C17.16	Structural Checklists for Building Type PC2A: Precast Concrete Frames without Shear Walls	553
C17.17	Structural Checklists for Building Types RM1: Reinforced Masonry Bearing Walls with Flexible Diaphragms and RM2: Reinforced Masonry Bearing Walls with Stiff Diaphragms	554
C17.18	Structural Checklists for Building Types URM: Unreinforced Masonry Bearing Walls with Flexible Diaphragms and URMa: Unreinforced Masonry Bearing Walls with Stiff Diaphragms	554
C17.19	Nonstructural Checklist	554
C18	REFERENCE DOCUMENTS	555
C18.1	Commentary References	555
INDEX		569